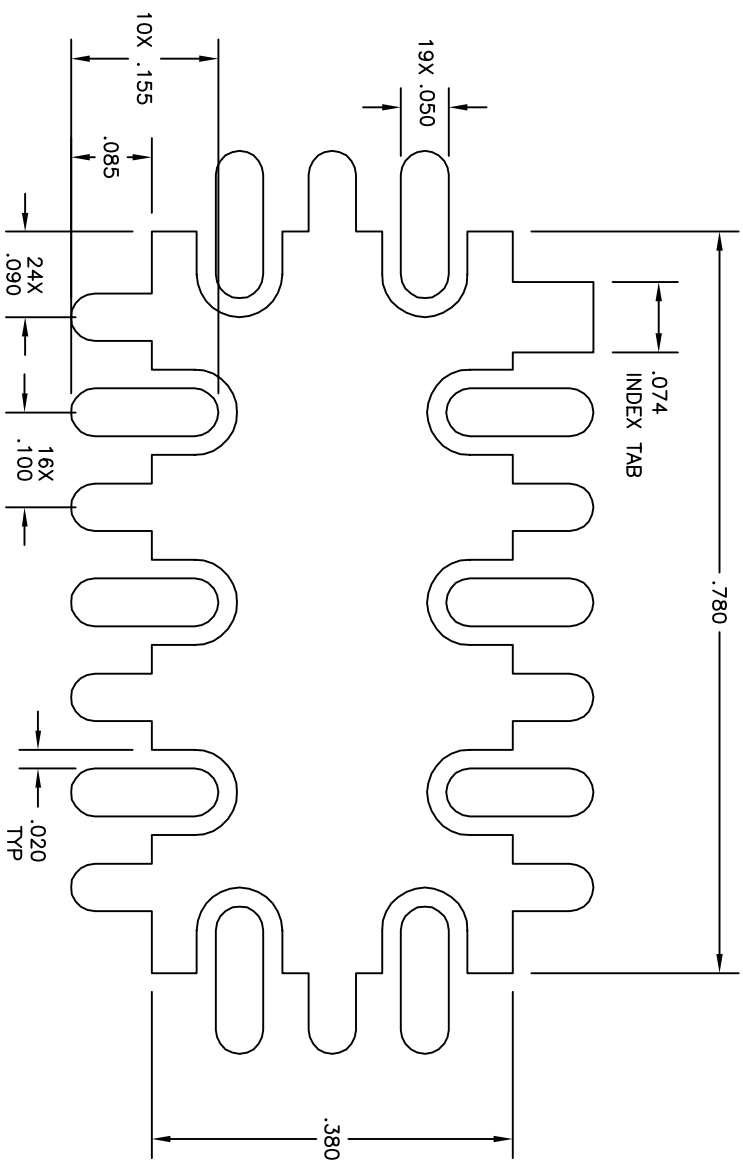
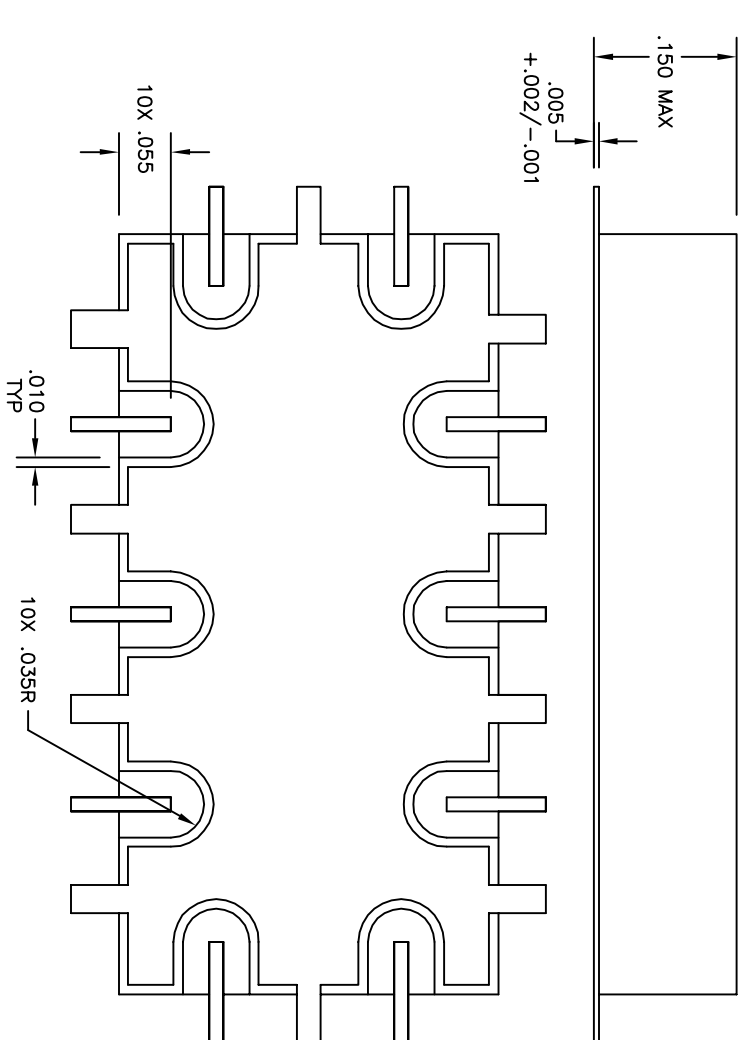
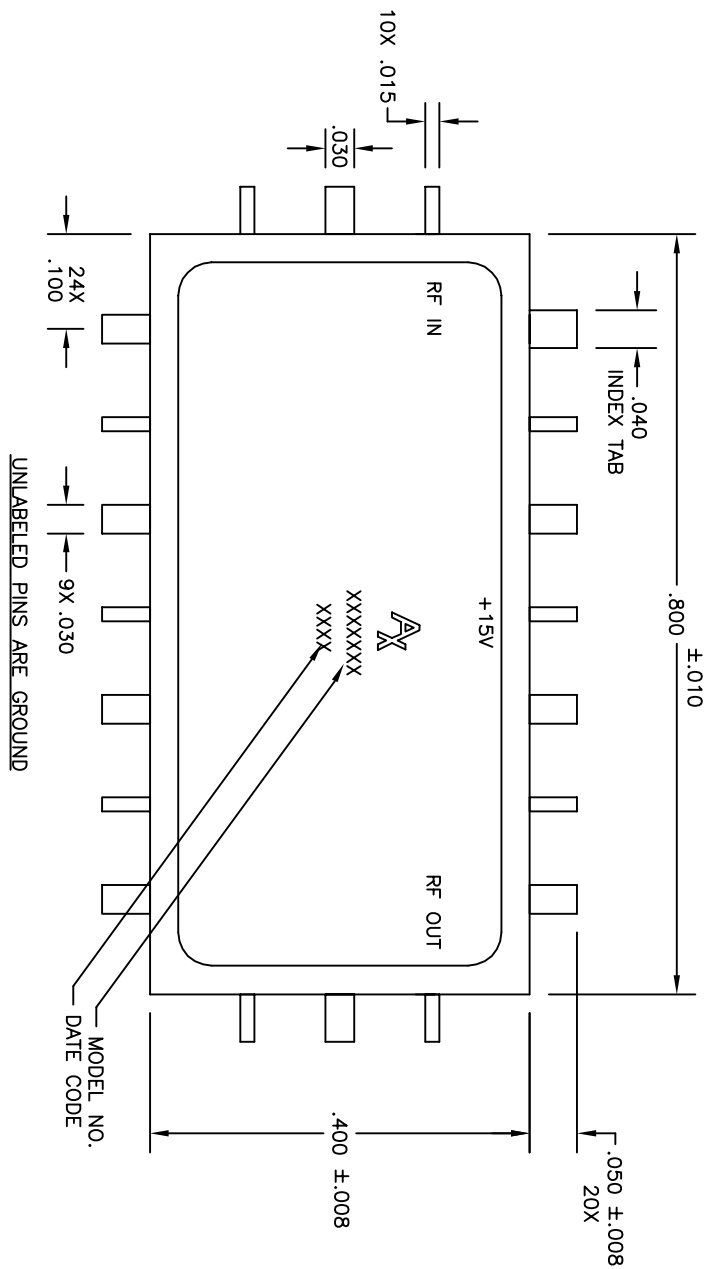


OTL 29200008

REVISIONS

LTR	DESCRIPTION	DATE	APPROVED
-	ECN 10897, RELEASE	8/10/01	
A	ECN 13009, ADDED RECOMMENDED FOOTPRINT	6/23/04	



RECOMMENDED FOOT PRINT PATTERN

CAUTION
 THIS ASSEMBLY CONTAINS PARTS SENSITIVE TO DAMAGE BY ELECTRO-STATIC DISCHARGE (ESD). USE ESD PRECAUTIONARY PROCEDURES WHEN TOUCHING, REMOVING OR INSERTING.

MATERIAL:	DRAWN	DATE	 PHILADELPHIA OPERATIONS 2707 BLACK LANE PLACE PHILADELPHIA PA 19154 (USA)
FINISH:	ADAM SIDLE	8/10/01	
DIMENSIONS: INCHES	CHECKED	DATE	OUTLINE DRAWING SM-4 PACKAGE
TOLERANCE	ENGINEERING	DATE	
DEC. .XX +/- .01	MANUFACTURING	DATE	CODE IDENT NO.
ANG .XXX +/- .002	QUALITY	DATE	60979
ANG .X +/- .3°			OTL 29200008
			K:\ENGINEER\ACLTWIN\OUT\SM_4
			SHEET 1 OF 1