

Terminations & Loads

Model 1455 General Purpose, N Connectors

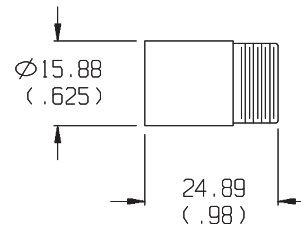
dc to 18.0 GHz
 2 Watt



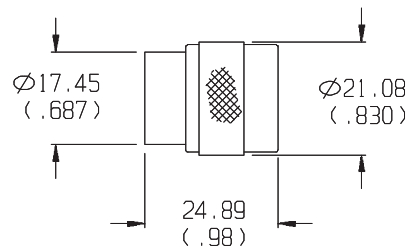
WEIGHT: 110 g (4 oz) maximum

PHYSICAL DIMENSIONS:

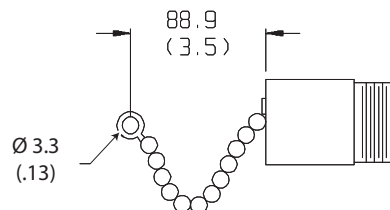
Model 1455-3:



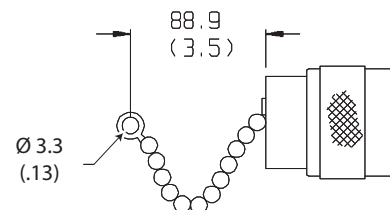
Model 1455-4:



Model 1455-3C:



Model 1455-4C:



NOTE: All dimensions are given in mm (inches) and are maximum, unless otherwise specified.

Features

- /// **Low Cost Type N Connector** - Interface dimensions per MIL-STD-348 Test connector.
- /// **Rugged Construction** - Numerically controlled machining is used to produce high quality uniform parts with controlled concentricity and surface finishes. The result is excellent SWR repeatability.

Specifications

NOMINAL IMPEDANCE: 50 Ω

FREQUENCY RANGE: dc to 18.0 GHz

MAXIMUM SWR:

Frequency Range (GHz)	1455-3 1455-3C	1455-4 1455-4C
dc - 8	1.20	1.20
8 - 12.4	1.25	1.20
12.4 - 18	1.30	1.25

POWER RATING: 2 watts **average** to 25°C ambient temperature, derated linearly to 1 watts @ 125°C. 1 kilowatt **peak** (5 μsec pulse width; 0.5 % duty cycle)

TEMPERATURE RANGE: -65°C to +125°C

CONNECTOR: Type N connector per MIL-STD-348 interface dimensions - mate nondestructively with MIL-C-39012 connector. Choice of male or female connector. Order as follows:

Model	Connector Type
1455-4	Type N Male
1455-3	Type N Female
1455-4C	Type N Male with chain
1455-3C	Type N Female with chain

CONSTRUCTION: Nickel plated brass connector; gold plated beryllium copper contacts, stainless steel bead chains.