

# TERMINATIONS

## 2.9mm

**DC - 40 GHz**  
**1 WATT**



MODELS: TS400M, TS400F, TS400HM, TS400HF

### SPECIFICATIONS:

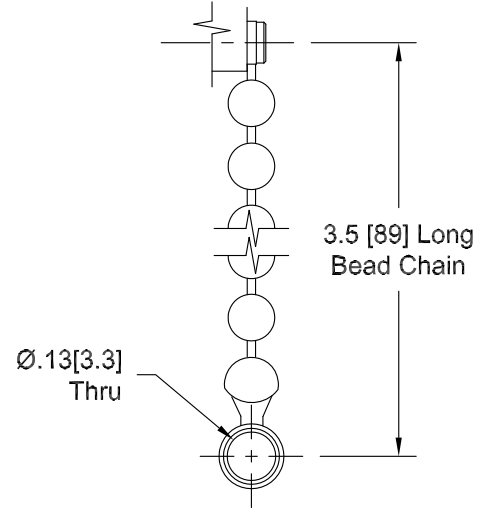
**Electrical:**

Frequency Range \_\_\_\_\_ DC - 40 GHz  
 VSWR \_\_\_\_\_ 1.20:1 Max.  
 Input Power \_\_\_\_\_ 1 Watt Avg. @ 25°C  
 \_\_\_\_\_ DERATED LINEARLY TO 0 WATTS @ +125°C  
 Impedance \_\_\_\_\_ 50 Ohms  
 Operating Temp Range \_\_\_\_\_ -55°C to +125°C  
 RF Leakage \_\_\_\_\_ 90 dB Min.

**Mechanical:**

2.9mm Connectors \_\_\_\_\_ Passivated Stainless Steel  
 Mate both Mechanically & Electrically with  
 all SMA, K\* & 3.5mm Series Connectors.  
 Conductors \_\_\_\_\_ Gold Plated Beryllium Copper  
 Bead Chain \_\_\_\_\_ Passivated Stainless Steel

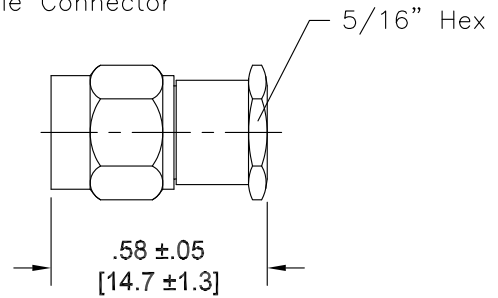
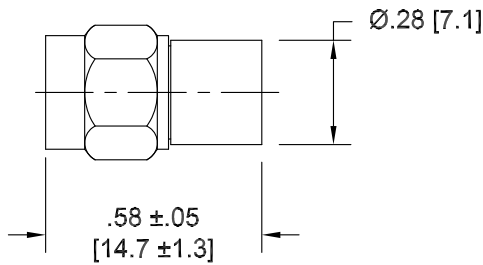
\*K is a trademark of Wiltron Corp.



**CHAIN DETAIL**

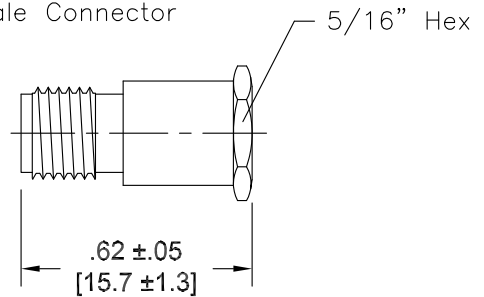
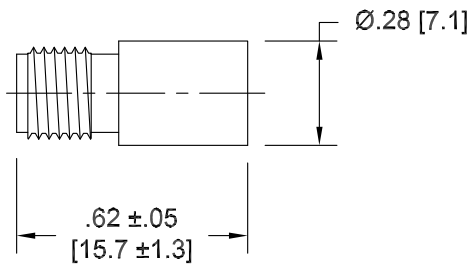
Model Number: **TS400M**  
2.9mm Male Connector

Model Number: **TS400HM**  
2.9mm Male Connector



Model Number: **TS400F**  
2.9mm Female Connector

Model Number: **TS400HF**  
2.9mm Female Connector



### HOW TO ORDER:

Model Number: **TS400XYZ**

- Style
  - = No Chain
  - C = Chain Included
- Body Style
  - = No Hex
  - H = Hex
- Connector Config.
  - M = Male
  - F = Female

### Ordering Examples:

Model Number: **TS400MC**  
2.9mm Male; DC-40 GHz; Chain Included

Model Number: **TS400HF**  
2.9mm Female; DC-40 GHz; Hex Style; No Chain

Note: Dimensions in Brackets are Expressed in Millimeters and are for Reference Only.  
 Design specifications are subject to change without notice.  
 Contact factory for technical specifications before purchasing or use.