

TERMINATION SMA

DC - 6 GHz
1 WATT



MODELS: TS398M

SPECIFICATIONS:

Electrical:

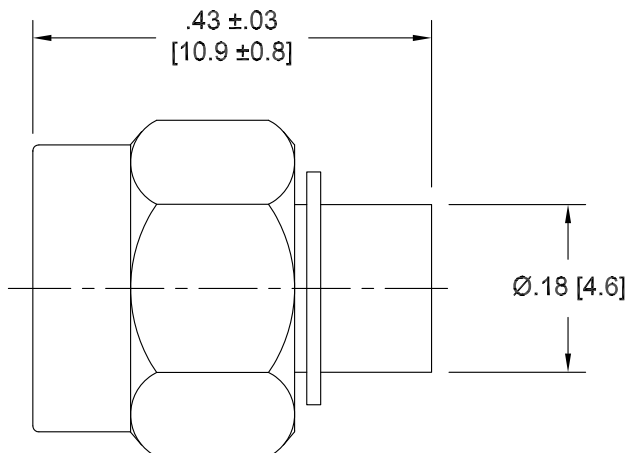
Frequency Range _____ DC – 6.0 GHz
VSWR
DC – 3 GHz _____ 1.15:1 Max.
3 – 6 GHz _____ 1.20:1 Max.
Impedance _____ 50 ±1 Ohms
Input Power _____ 1 Watt Avg. @ +25°C
Derated Linearly to 10% @ +125°C
Peak Power _____ 1 kW Max.
(5uSec Pulse, .05% Duty Cycle)
Temperature Coefficient _____ ± 200 ppm / °C
Operating Temperature Range _____ -55°C to +125°C

Mechanical:

SMA Connectors _____ White Bronze Plated Brass
Mates with MIL-STD-348
Coupling Nut _____ White Bronze Plated Brass
Conductor _____ Gold Plated Brass



Model Number: **TS398M**



Note:

Unit Shown, and Dimensions Occur, with Coupling
Nut
Biased Fully Forward (as Installed).

Note: Dimensions in Brackets are Expressed in Millimeters and are for Reference Only.
Design specifications are subject to change without notice.
Contact factory for technical specifications before purchasing or use.