

TERMINATION REVERSE POLARITY SMA MALE

DC - 6 GHz
1 WATT



MODELS: 3206-SMARP

SPECIFICATIONS:

Electrical:

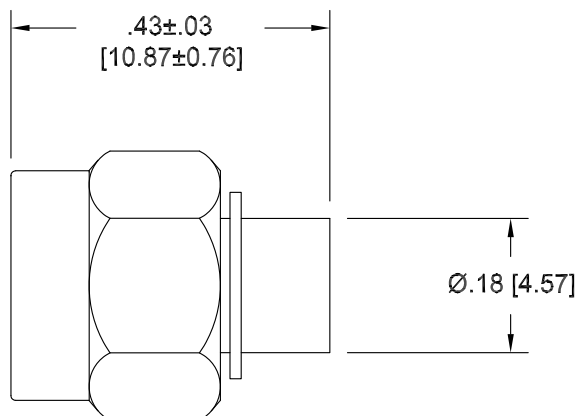
Frequency Range _____ DC - 6 GHz
VSWR
DC - 3 GHz _____ 1.15:1 Max.
3 - 6 GHz _____ 1.20:1 Max.
Impedance _____ 50 Ohms
Input Power _____ 1 Watt Avg. @ +25°C
Derated Linearly to 10% @ +125°C
Operating Temperature Range _____ -55°C to +125°C

Mechanical:

Reverse Polarity SMA Male _____ White Bronze Plated Brass
Mates with Reverse Polarity SMA Female
Conductor _____ Gold Plated Beryllium Copper
Coupling Nut _____ White Bronze Plated Brass



Model Number: **3206-SMARP**



Note:

Unit Shown, and Dimensions Occur, with Coupling
Nut
Biased Fully Forward (as Installed).

Note: Dimensions in Brackets are Expressed in Millimeters and are for Reference Only.
Design specifications are subject to change without notice.
Contact factory for technical specifications before purchasing or use.