

DC BIAS PASSING ATTENUATORS

50 MHz - 3 GHz

100 VOLTS

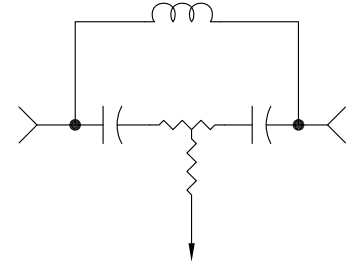


MODELS: 9095-N-XX, 9095-SMA-XX, 9095-TNC-XX

SPECIFICATIONS:

Electrical: (@ 25°C Ambient)

Frequency Range _____ 50 MHz - 3 GHz
 Standard dB Values _____ 3, 4, 6, 10 & 20dB
 Attenuation Accuracy
 3, 4, 6 & 10dB _____ ±2.0 dB **
 20dB _____ ±2.5 dB
 Impedance _____ 50 Ohms
 DC Resistance *** _____ 0.25 Ohms Max.
 (CC IN TO CC OUT)
 VSWR _____ 1.35:1 Max.
 Voltage Rating _____ 100 Volts Max.
 DC Current _____ 2 Amps. Max.
 (Max DC Bias Power 100 Watts.)
 RF Power (Avg) _____ 2 Watts Max.
 DERATED LINEARLY TO 0.7 WATTS @ +85°C
 Operating Temp. Range _____ -55°C to +85°C



SCHEMATIC DIAGRAM

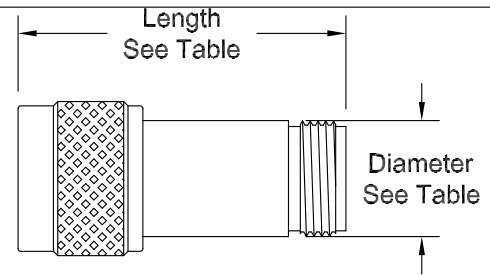
Mechanical:

Connectors _____ Passivated Stainless Steel
 Mates With MIL-STD-348
 Conductors _____ Gold Plated Beryllium Copper or Brass

**dB Values ≤15 are Typically Within ±1.0dB
 *** CENTER CONDUCTOR TO CASE DC ISOLATED > 5 MEGAOHMS

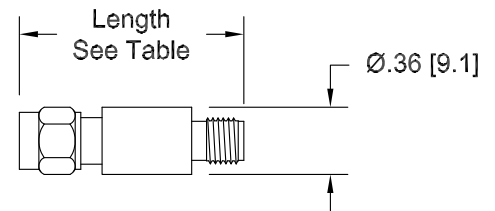
Model Number: **9095-N-XX**
 Type N Connectors

| dB Value | Length | Diameter |
|--------------|--------------------------|----------------|
| 3, 4, 6 & 10 | 1.76 ±.05 [44.7 ±1.3] | ∅.62 [15.8] |
| 20 | 2.28 ±.05 [57.9 ±1.3] | ∅.56 [14.2] |



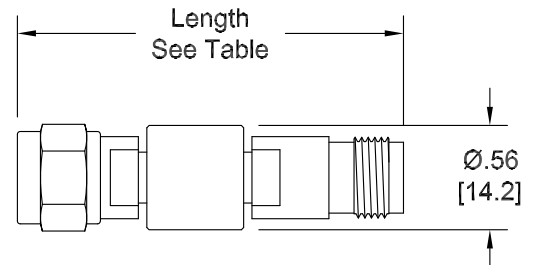
Model Number: **9095-SMA-XX**
 SMA Connectors

| dB Value | Length | |
|--------------|-----------|-------------|
| | Inches | Millimeters |
| 3, 4, 6 & 10 | 1.21 ±.05 | [30.7 ±1.3] |
| 20 | 1.57 ±.05 | [39.9 ±1.3] |



Model Number: **9095-TNC-XX**
 TNC Connectors

| dB Value | Length | |
|--------------|-----------|-------------|
| | Inches | Millimeters |
| 3, 4, 6 & 10 | 2.07 ±.05 | [52.6 ±1.3] |
| 20 | 2.45 ±.05 | [62.2 ±1.3] |



HOW TO ORDER:

Model Number: **9095-YYY-XX**

Connector Type _____ dB Value
 N = Type N
 SMA = SMA
 TNC = TNC

Ordering Examples:

Model Number: **9095-N-10**
 10 dB; Type N; Male/Fem

Model Number: **9095-TNC-20**
 20 dB; TNC; Male/Fem

Note: Dimensions in Brackets are Expressed in Millimeters and are for Reference Only.
 Design specifications are subject to change without notice.
 Contact factory for technical specifications before purchasing or use.