

ADAPTERS, IN-SERIES 7/16 - DIN

DC - 7.5 GHz



MODELS: 5701, 5702 & 5703

SPECIFICATIONS:

Electrical:

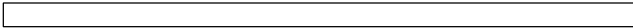
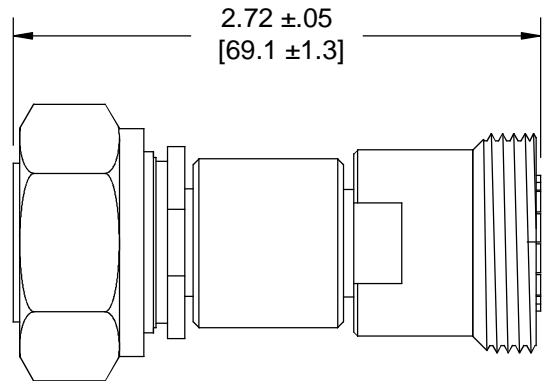
Frequency Range _____ DC – 7.5 GHz
 VSWR _____ 1.35:1 Max.
 Impedance _____ 50 Ohms
 Operating Temp Range _____ -65°C to +125°C

Mechanical:

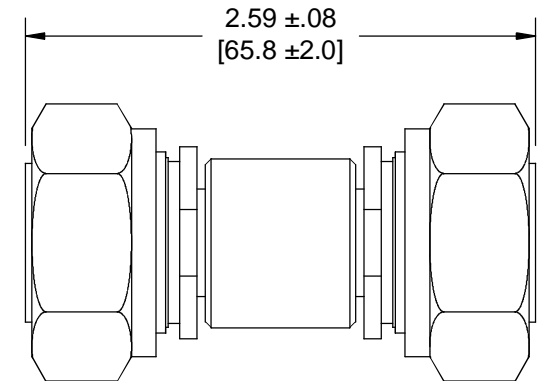
7/16 DIN Connectors _____ Silver or White Bronze
 Mates with DIN 47 223 _____ Plated Brass
 Conductors _____ Silver or White Bronze
 _____ Plated Beryllium Copper



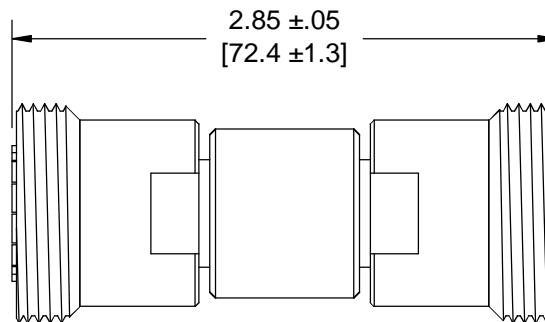
Model Number: **5703**
 Male/Female Connectors



Model Number: **5702**
 Male/Male Connectors



Model Number: **5701**
 Female/Female Connectors



Note: Dimensions in Brackets are Expressed in Millimeters and are for Reference Only.
 Design specifications are subject to change without notice.
 Contact factory for technical specifications before purchasing or use.

5703; REV G