

ADAPTERS, BETWEEN SERIES DC - 26.5 GHz SMA / 2.9mm



MODELS: 5262, 5263, 5264, 5265

SPECIFICATIONS:

Electrical:

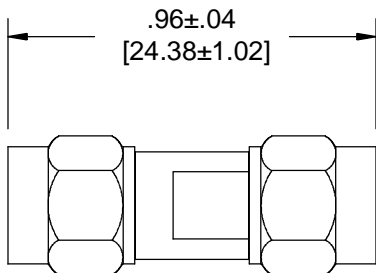
Frequency Range _____ DC – 26.5 GHz
 VSWR _____ 1.25:1 Max.
 Impedance _____ 50 Ohms
 Operating Temp Range _____ -65°C to +125°C

Mechanical:

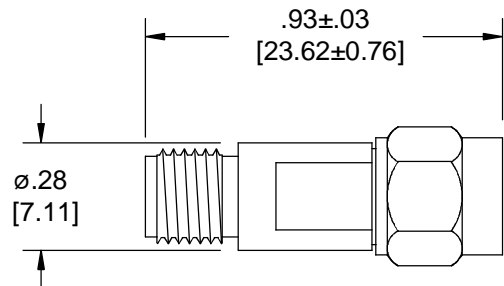
SMA Connectors _____ Passivated Stainless Steel
Mates with MIL-STD-348
 2.9mm Connectors _____ Passivated Stainless Steel
Mates SMA, 3.5mm and K* Connectors as well as SMK IAW MIL-STD-348
 Conductors _____ Gold Plated Beryllium Copper

*K is a trademark of Anritsu Corp.

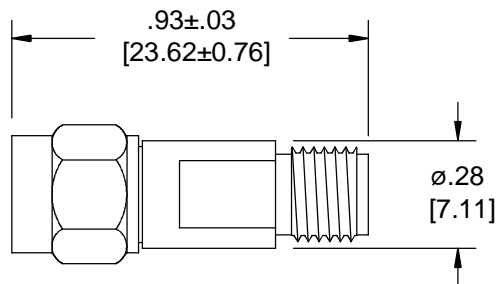
Model Number: **5262**
 SMA Male to 2.9mm Male



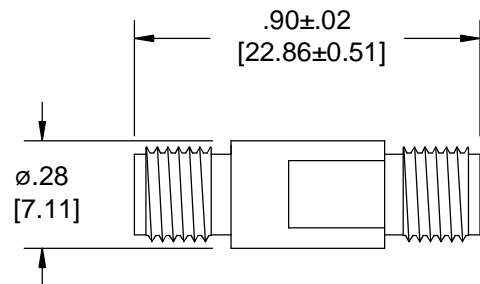
Model Number: **5263**
 SMA Female to 2.9mm Male



Model Number: **5264**
 SMA Male to 2.9mm Female



Model Number: **5265**
 SMA Female to 2.9mm Female



Note: Dimensions in Brackets are Expressed in Millimeters and are for Reference Only.
 Design specifications are subject to change without notice.
 Contact factory for technical specifications before purchasing or use.