

ADAPTERS, BETWEEN SERIES SMA / 3.5mm

DC - 18 GHz



MODELS: 5246, 5247, 5248, 5249

SPECIFICATIONS:

Electrical:

Frequency Range _____ DC – 18.0 GHz
 VSWR _____ 1.25:1 Max.
 Impedance _____ 50 Ohms
 Operating Temp Range _____ -65°C to +125°C

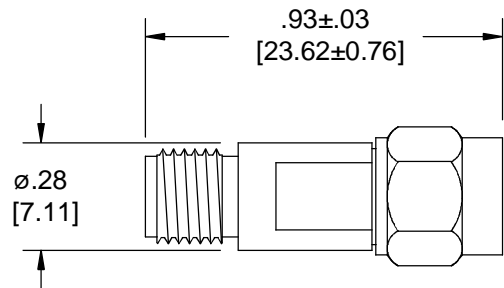
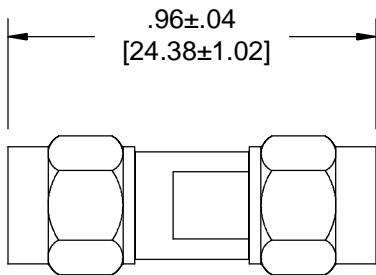
Mechanical:

SMA Connectors _____ Passivated Stainless Steel
Mates with MIL-STD-348
 3.5mm Connectors _____ Passivated Stainless Steel
Mates both Electrically and Mechanically with all
 SMA & K* Series Connectors.
 Conductors _____ Gold Plated Beryllium Copper

*K is a trademark of Anritsu Corp.

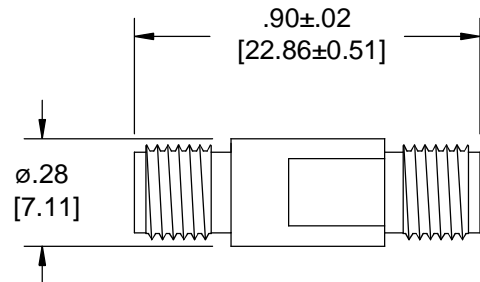
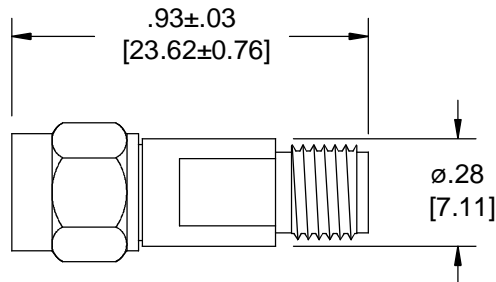
Model Number: **5246**
 SMA Male to 3.5mm Male

Model Number: **5248**
 SMA Female to 3.5mm Male



Model Number: **5247**
 SMA Male to 3.5mm Female

Model Number: **5249**
 SMA Female to 3.5mm Female



Note: Dimensions in Brackets are Expressed in Millimeters and are for Reference Only.
 Design specifications are subject to change without notice.
 Contact factory for technical specifications before purchasing or use.