

ADAPTERS, BETWEEN SERIES TYPE N / SMA

DC - 18 GHz BULKHEAD MOUNT



MODELS: 5209, 5210, 5212 & 5213

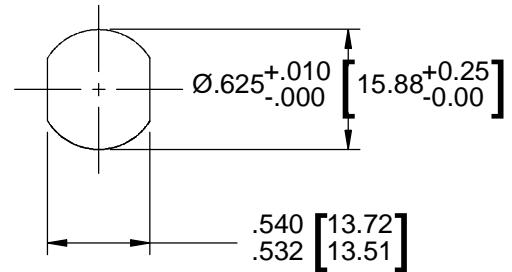
SPECIFICATIONS:

Electrical:

Frequency Range _____ DC - 18.0 GHz
 VSWR _____ 1.20:1 Max.
 Impedance _____ 50 Ohms
 Temperature Range _____ -65°C to +125°C

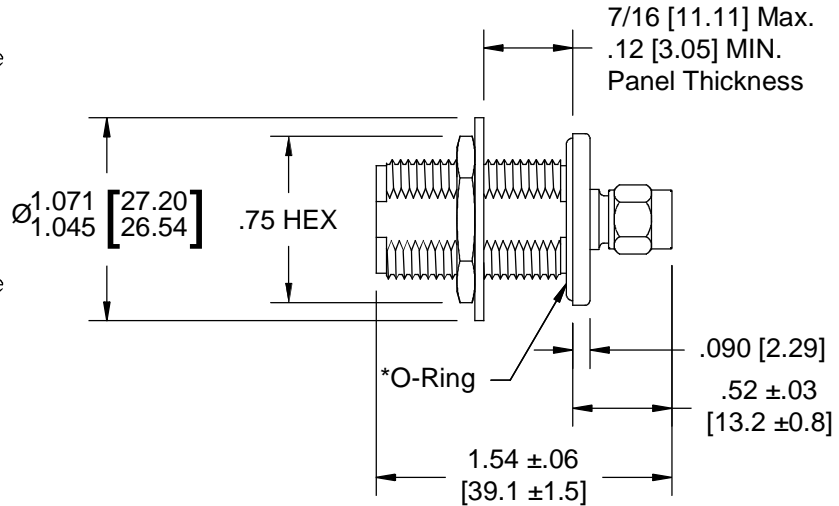
Mechanical:

Connectors _____ Passivated Stainless Steel
 (Mates with MIL-STD-348)
 Conductors _____ Gold Plated Beryllium Copper
 Nut & Washer _____ Passivated Stainless Steel
 O-Ring _____ Silicone Rubber



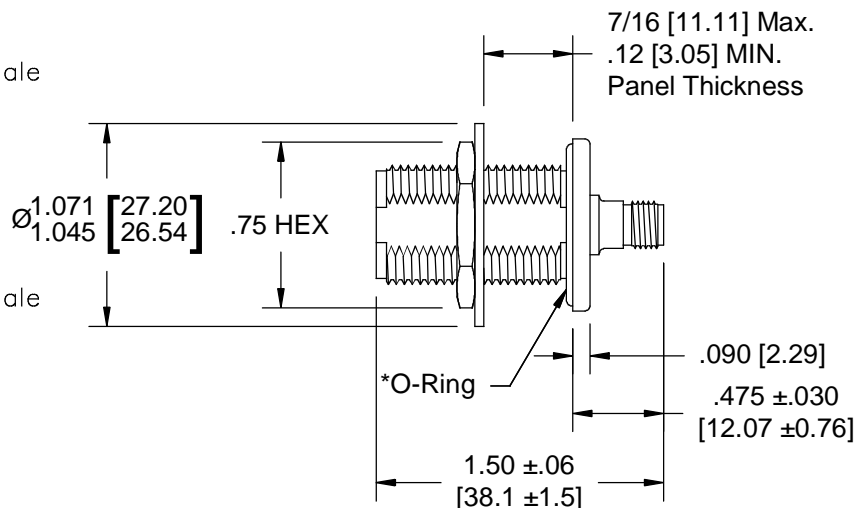
Recommended Panel Configuration

Model Number: **5213**
 Type N Female / SMA Male
 *Includes O-Ring as Shown



Model Number: **5210**
 Type N Female / SMA Male
 No O-Ring Included

Model Number: **5212**
 Type N Female / SMA Female
 *Includes O-Ring as Shown



Model Number: **5209**
 Type N Female / SMA Female
 No O-Ring Included

Panel Nut, Lock Washer and O-Ring are Shipped Unassembled.

Note: Dimensions in Brackets are Expressed in Millimeters and are for Reference Only.
 Design specifications are subject to change without notice.
 Contact factory for technical specifications before purchasing or use.

5213; REV F