

# ADAPTERS, IN-SERIES SMA

## DC - 26.5 GHz



MODELS: 5163, 5164 & 5165

### SPECIFICATIONS:

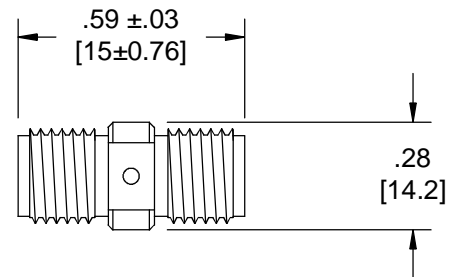
#### Electrical:

Frequency Range \_\_\_\_\_ DC - 26.5 GHz  
VSWR \_\_\_\_\_ 1.20:1 Max.  
Impedance \_\_\_\_\_ 50 Ohms  
Operating Temp Range \_\_\_\_\_ -65°C to +125°C

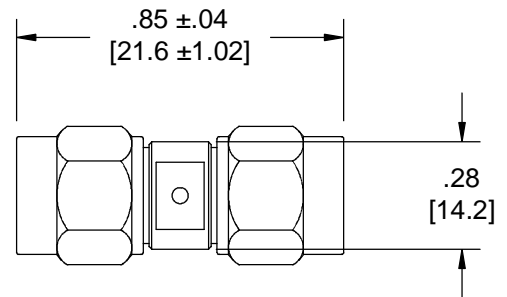
#### Mechanical:

Connectors \_\_\_\_\_ Passivated Stainless Steel  
(Mates with MIL-STD-348)  
Conductors \_\_\_\_\_ Gold Plated Beryllium Copper

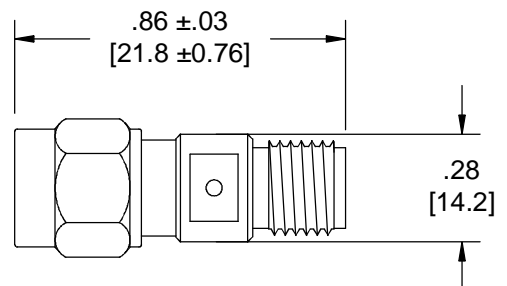
Model Number: **5163**  
Female/Female Connectors



Model Number: **5164**  
Male/Male Connectors



Model Number: **5165**  
Male/Female Connectors



Note: Dimensions in Brackets are Expressed in Millimeters and are for Reference Only.  
Design specifications are subject to change without notice.  
Contact factory for technical specifications before purchasing or use.

5163; REV A