

Mechanical Phase Shifters: Model 917 Miniature In-Line Phase Shifter ✔ RoHS

Ruggedized 2.92mm Connector

dc to 18.0 GHz
20 Watts

Features

- **Self Locking** - Internal mechanism eliminates the need for a locking nut. Ideal for phase trimming in densely packaged systems with minimum accessibility.
- **Linear** - Provides a linear adjustable phase shift to 18 GHz in a very small in-line coaxial package.

Specifications

- Nominal Impedance:** 50 Ω
- Frequency Range:** dc to 18.0 GHz
- Incremental Phase Shift:** Adjustable to 225° @ 18 GHz; 100° at 9 GHz (typical).
- Resolution:** 0.5° per turn per GHz, typical (Adjustment shaft has 20 turns for full range).
- Insertion Phase:** 890° @ 10 GHz (Typical)
- Phase vs Frequency:** Nominally linear response
- Insertion Loss:** 0.8 dB maximum (0.5 dB typical @ 18 GHz)
- Power Rating:** 20 watts average

Maximum SWR:

Frequency Range (GHz)	SWR
dc - 18	1.5

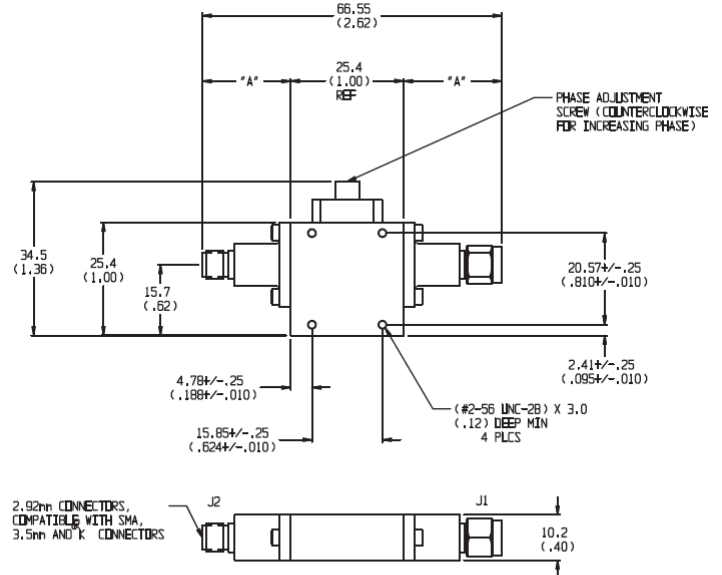
Temperature Range: -55°C to 125°C

Connector: SMK (2.92mm) connector compatible with SMA, 3.5mm, SMK and other 2.92mm connectors.

Available connector options are:

Connector Options	Type/Description
1	SMK, Female
2	SMK, Male

Weight: 45g (1.6 oz)



CONN TYPE	DIM A
Female	19.81 (0.78)
Male	21.34 (0.84)

NOTE: All dimensions are given in mm (inches) and are nominal +0.5 (0.02), unless otherwise specified.

Model Number Description:

Example: **917 - XX**

Basic Model Number Connector Options*
1st digit is J1 side
2nd digit is J2 side