

Fixed Coaxial Attenuators Model 49, High Power, N Connectors

RoHS

Conduction/Convection Cooled

**dc to 8.5 GHz
150 Watts**

Features

- Quality connectors with special high temperature support beads
- Designed to meet environmental requirements of MIL-DTL-3933
- **Flexible Mounting Position** - The units may be mounted in horizontal (fins up) or vertical position.

Specifications

Nominal Impedance: 50 Ω

Frequency Range: Model: dc 8.5 to GHz

Maximum Deviation Over Frequency (db):

Nominal ATTN (dB)	49		49-LIM	
	dc - 4 GHz	4 -8.5 GHz	dc - 4 GHz	4 -8.5 GHz
3, 6	± 0.50	± 1.00	---	---
10, 20	± 0.40	± 0.75	± 0.70	± 1.25
30	± 0.40	± 0.75	± 0.70	± 1.75
40	± 0.50	± 1.00	± 0.70	± 1.75

Maximum SWR:

Frequency (GHz)	SWR
dc - 4	1.25
4 - 8.5	1.35

3rd Order Intermodulation (49-Xx-Xx-Lim Only):

Reflected Levels (IM3), -100 & Through Levels (IM3), -110 dBc with two input signals @ 869 MHz and 891 MHz with average carrier power levels of +43 dBm each.

Power Rating (mounted horizontally or vertically):

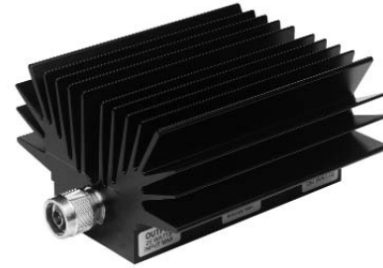
150 watts average (unidirectional) to 25°C ambient temperature, derated linearly to 15 watts @ 125°C. 5 kilowatt peak (5 μsec pulse width; 1.5% duty cycle). Maximum power rating into output port is 25 watts average.

Power Coefficient: <0.0001 dB/dB/watt

Temperature Coefficient: < 0.0004 dB/dB/°C

Temperature Range: -55 °C to 125 °C

Test Date: Swept data plots of attenuation and SWR from 50 MHz to 8.5 GHz supplied.



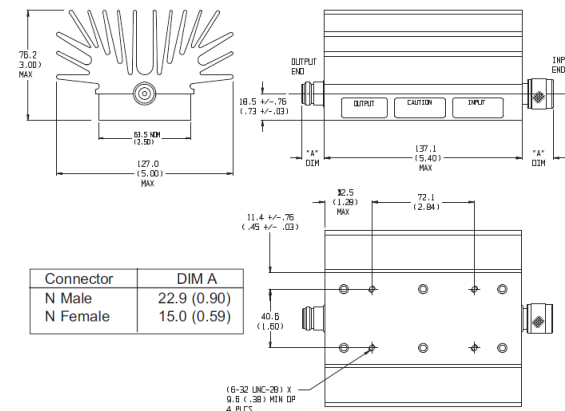
Connectors: Type N connectors per MIL-STD-348 interface dimensions - mate - nondestructively with MIL-C-39012 connectors.

Options	Description
3	Type N, Female
4	Type N, Male

Construction: Aluminum alloy body, stainless steel connectors; gold plated beryllium copper female contacts or stainless steel male contacts. (-LIM option uses different connector and contact materials)

Weight: 1,600 g (3 lbs, 8 oz) maximum

Physical Dimensions:

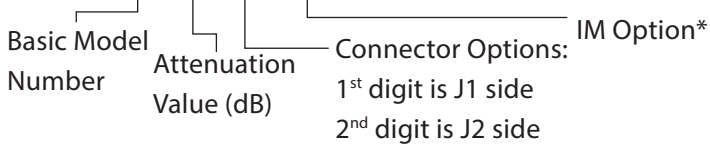


Fixed Coaxial Attenuators Model 49, High Power, N Connectors

Conduction/Convection Cooled

Model Number Description:

Example: 49 - XX - XX - LIM



**dc to 8.5 GHz
150 Watts**

*Add -LIM for Low Intermodulation option. Option only available in 10, 20, 30, and 40 dB and is not available through Express.