

# Terminations SMA

**DC - 18 GHz**  
**10 Watts**

MODELS: TSXXXM-10W, TSXXXF-10W

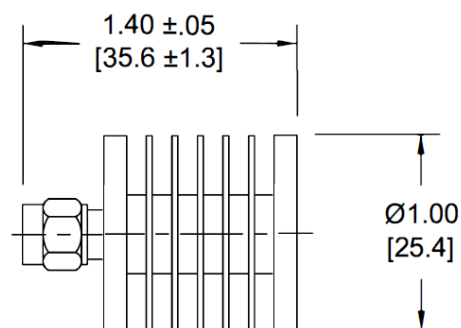
## Technical Specifications

Parameter	Value
<i>Electrical</i>	
Frequency Range	DC – 18 GHz
Standard Freq. Values	6, 18 GHz
VSWR	DC – 6 GHz 1.20:1 max. 6 – 12.4 GHz 1.30:1 max. 12.4 – 18 GHz 1.40:1 max.
Input Power	10 Watts Average @ +25°C Derated linearity to 2 watts @ +125°C
Peak Power	500 Watts max. (5µSec pulse, 0.05% duty cycle)
Impedance	50 Ohms
Operation Temp. Range	-65°C to +125°C

Parameter	Value
<i>Mechanical</i>	
SMA Connectors Mates with MIL-STD-348	Passive Stainless Steel
Conductors	Gold Plated Beryllium Copper
Housing	Anodized Aluminum

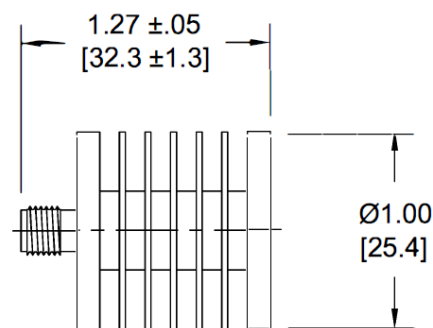
### Model Number TSXXXM-10W

SMA Male Connector



### Model Number TSXXXF-10W

SMA Female Connector



## How To Order

Model #: TSXXX~~Y~~-10W

Freq. Range. ————  
 060 = DC-6 GHz      Connector Config.  
 180 = DC-18 GHz    F = Female  
                              M = Male

## Order Examples

Model number: TS180M-10W  
DC-18 GHz, SMA male

Model number: TS060F-10W  
DC-6 GHz, SMA female

\*\*Dimensions in brackets are expressed in millimeters and are for reference only.

sales@am.spectrumcontrol.com

Approved for Release: November 2024/Brown

Spectrum Control reserves the right to make changes to datasheets at any time without notice.