

Terminations

2.9mm

DC – 40 GHz

MODELS: TS400M, TS400F, TS400HM, TS400HF

Technical Specifications

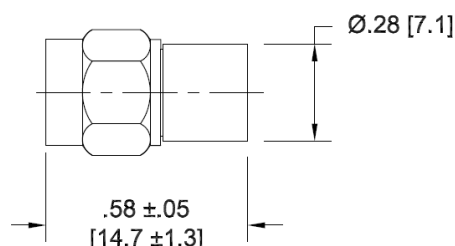
Parameter	Value
<i>Electrical</i>	
Frequency Range	DC – 40 GHz
VSWR	1.20:1 max.
Impedance	50 Ohms
Input Power	1 Watt Average @ +25°C Derated linearity to 0 Watt @ +125°C
Operation Temp. Range	-55°C to +125°C
RF Leakage	90 dB min.

Parameter	Value
<i>Mechanical</i>	
2.9mm Connectors Mates both mechanically and electrically with all SMA, 3.5mm and K* series connectors.	Passivated Stainless Steel
Bead Chain	Passivated Stainless Steel
Conductors	Gold Plated Beryllium Copper

*K is a trademark of Wiltron Corp.

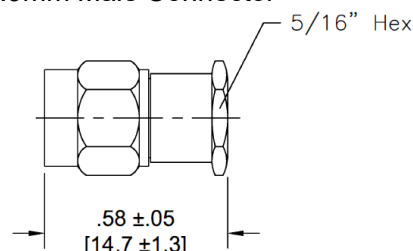
Model Number TS400M

2.9mm Male Connector



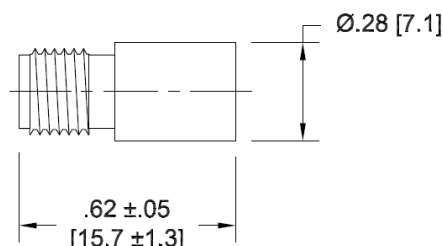
Model Number TS400HM

2.9mm Male Connector



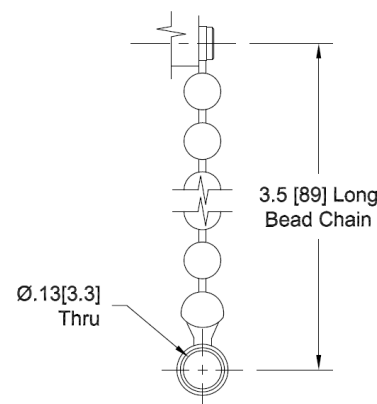
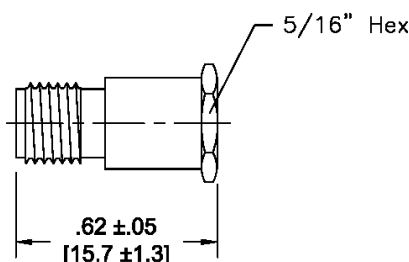
Model Number TS400F

2.9mm Female Connector



Model Number TS400HF

2.9mm Female Connector



CHAIN DETAIL

How To Order

Model #: TS400XYZ

Body Style = No hex
 H = Hex
 Connector Config.
 M = Male
 F = Female
 Style = No chain
 C = Chain included

Order Examples

Model number: TS400MC
 DC-40 GHz, 2.9mm male, chain included

Model number: TS400HF
 DC-40 GHz, 2.9mm female, Hex style, no chain

**Dimensions in brackets are expressed in millimeters and are for reference only.

sales@am.spectrumcontrol.com

Approved for Release: November 2024/Brown

Spectrum Control reserves the right to make changes to datasheets at any time without notice.