

Model: PPA20
Technical Specifications

Parameter	Value		
	<i>Electrical</i>		
Frequency Range	DC – 4 GHz		
Available Atten. Values	1-12, in 1 dB increments & 20 dB		
Atten. Accuracy	DC–1 GHz	1-2.5 GHz	2.5-4 GHz
	1 – 5 dB	±0.5 dB	±0.5 dB
	6 – 9 dB	±0.5 dB	±1.0 dB
	10 – 12 dB	±0.75 dB	±1.5 dB
	20 dB	±1.0 dB	±3.0 dB
Impedance	50 Ohms		
Power Handling*	20 Watts max.		
VSWR	DC – 1.0 GHz	1.15:1 max.	
	1.0 – 2.5 GHz	1.35:1 max.	
	2.5 – 4.0 GHz	1.50:1 max.	
	Operating Temp. Range	-55°C to +150°C	

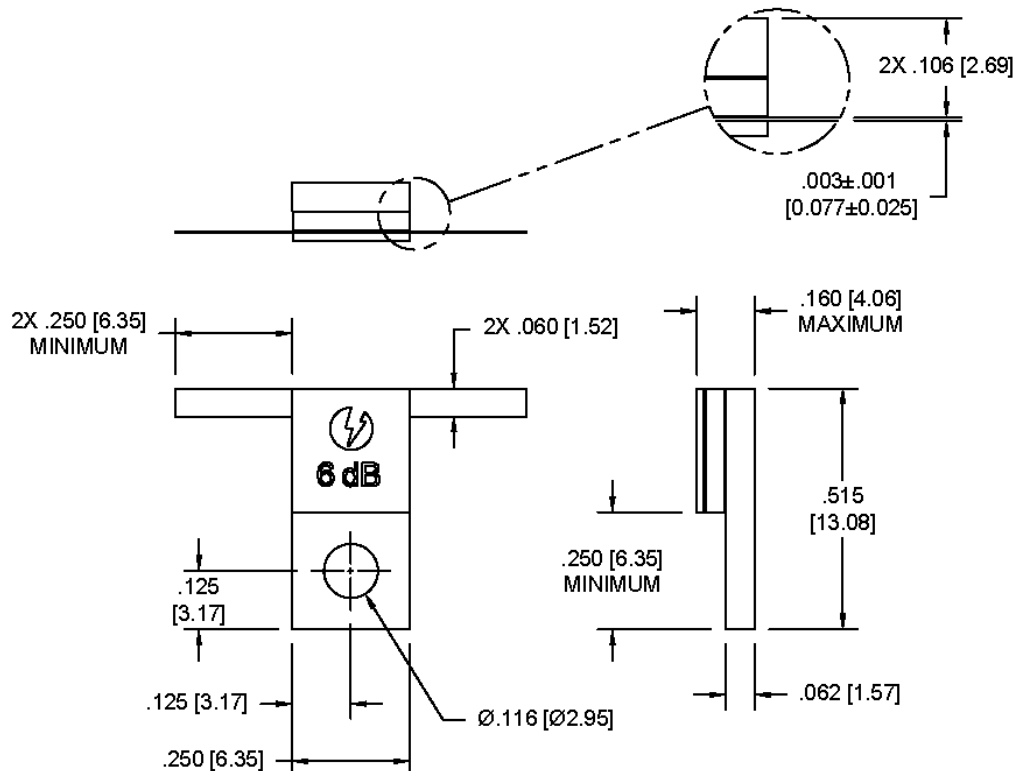
Parameter	Value
	<i>Mechanical</i>
Substrate	Beryllium Oxide
Resistor Material	Proprietary Thin Film
Cover	Alumina Ceramic
Flange	Nickel Plated Copper
Tab	Gold Plated Beryllium Copper

*Mounting surface shall not exceed 100°C max.

Model Number: PPA20-6 shown

**Dimensions in brackets are expressed in millimeters and are for reference only.

Tolerance: .XXX = ±.010


How To Order

PPA20-XX

└── dB Value