

Model 1431

High Power, N & 3.5mm Connectors

Convection Cooled

DC to 18.0 GHz
100 Watts

 **RoHS**



CONNECTOR: Type N connector mates nondestructively with MIL-C-39012 connector. Choice of male (-4) or female connector (-3).

3.5mm connector mates nondestructively with SMA per MIL-C-39012, 2.92mm and other 3.5mm connector. Choice of male (-2) or female connector (-1).

CONSTRUCTION: Black, finned aluminum body, stainless steel connector; gold plated beryllium copper contact or stainless steel male contact.

WEIGHT: 320 g (11 oz)

PHYSICAL DIMENSIONS:

Features

- /// Designed to meet environmental requirements of MIL-D-39030.
- /// Rugged injection molded connector.
- /// 1 Kilowatt Peak Power

Specifications

NOMINAL IMPEDANCE: 50 Ω

FREQUENCY RANGE: DC to 18.0 GHz

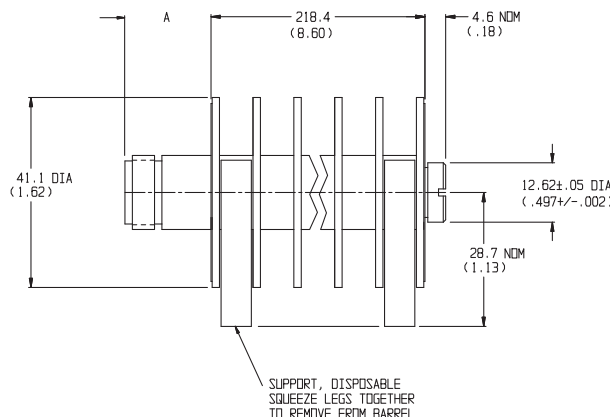
MAXIMUM SWR:

| Frequency (GHz) | SWR |
|-----------------|------|
| DC - 8 | 1.20 |
| 8 - 18 | 1.30 |

POWER RATING: 100 watts **average** (mounted horizontally assuming unobstructed air flow and natural convection around unit) @ 25°C ambient temperature, derated linearly to 10 watts @ 125°C. 1 kilowatt **peak** (5 μ sec pulse width; 5% duty cycle).

TEMPERATURE RANGE: -55°C to +125°C

TEST DATA: Swept data plots of SWR from 50 MHz to 18 GHz is available at additional cost.



| Model # | DIM A | Connector Type |
|-----------------------|-------------|----------------|
| FD1431-1 & 1431-1-LIM | 13.2 (0.52) | 3.5mm female |
| FD1431-2 & 1431-2-LIM | 14.0 (0.55) | 3.5mm male |
| 1431-3 & 1431-3-LIM | 18.3 (0.72) | N female |
| 1431-4 & 1431-4-LIM | 23.1 (0.91) | N male |

NOTE: All dimensions are given in mm (inches) and are maximum, unless otherwise specified.