

DC Blocks

2.9mm

10 MHz – 40 GHz

MODEL: 8143A & 8146A

Technical Specifications

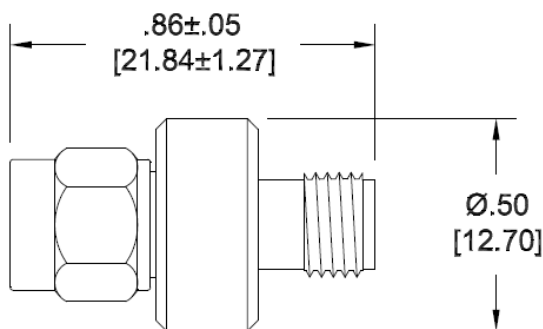
Parameter	Value
<i>Electrical</i>	
Frequency Range	10 MHz – 40 GHz
VSWR	1.45:1 max.
Impedance	50 Ohms
Insertion Loss	0.75 dB max.
Voltage Rating	200 Volts max.
Operation Temp. Range	-65°C to +125°C

Parameter	Value
<i>Mechanical</i>	
Connectors Mates both mechanically and electrically with SMA, 3.5mm and K* series connectors	Passivated Stainless Steel
Conductors	Gold Plated Beryllium Copper
Housing Inner Only Blocks Inner / Outer Blocks	Passivated Stainless Steel High Temperature Plastic

*K is a trademark of Wiltron Corp.

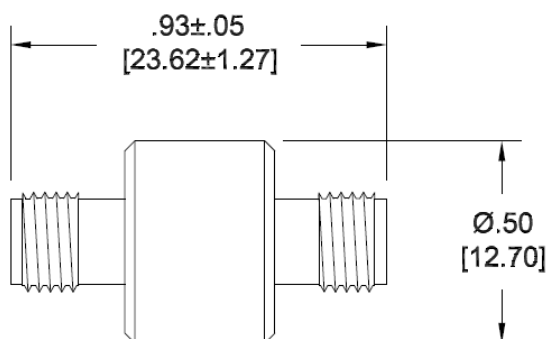
Model Number: 8143A

2.9mm Male to Female; Inner / Outer
Weight: 5.5 grams max.



Model Number: 8146A

2.9mm Female to Female; Inner / Outer
Weight: 6.2 grams max.



**Dimensions in brackets are expressed in millimeters and are for reference only.

sales@am.spectrumcontrol.com

Approved for Release: November 2024/Brown

Spectrum Control reserves the right to make changes to datasheets at any time without notice.