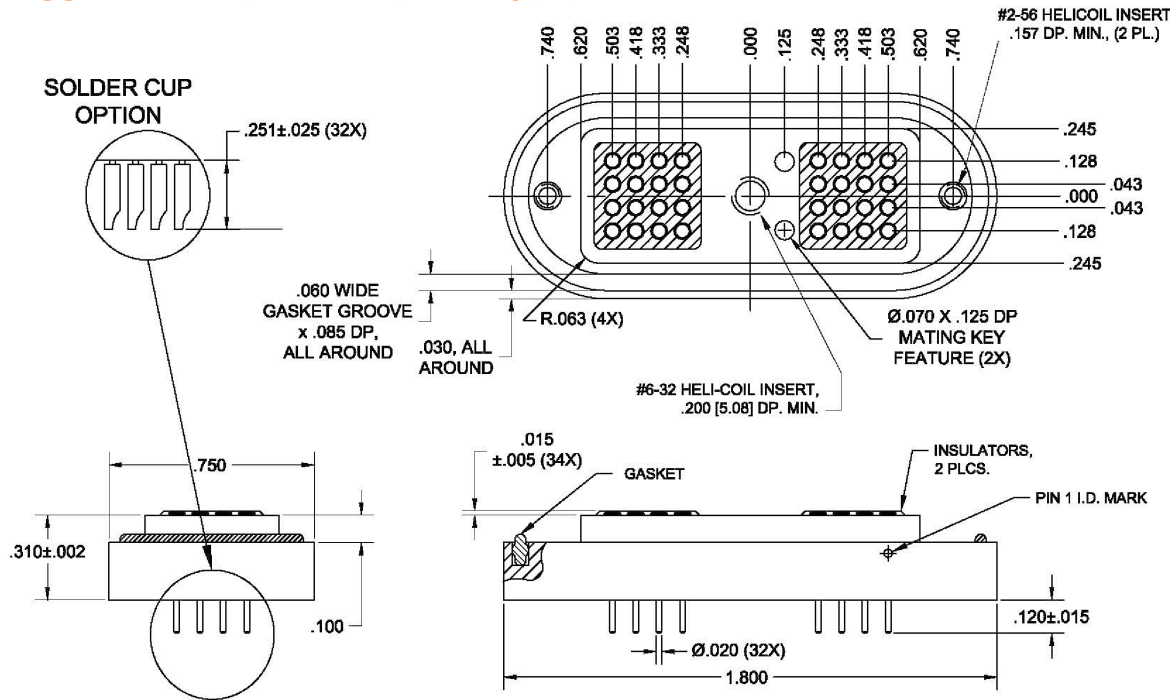


Rapid Mate Connectors

Rugged, hot shoe style connector ensuring system functionality in EMI-prone applications.

Spectrum Control's Rapid Mate product offering provides a complete interconnect solution for applications that require a quick connect/disconnect. This rugged package is designed to withstand harsh environments in military, industrial, and commercial applications and are available in non-filtered and filtered configurations to meet EMI filtering requirements along with a wide selection of mechanical layouts.

Ruggedized Rapid Mate (Male Type)



General Specifications

Electrical

Capacitance: Contact us
Working Voltage: 100VDC
Max. Current Rating: 5A Max.
Circuit Type: Feedthrough

Material/Finish

Lead: Gold Plated/Copper Alloy
Housing: Nickel Plated/Aluminum
Gasket: Silicone
Insulator: High Temperature Plastic

Environmental (Per MIL-STD-810)

2 Meter Immersion (IP67, IP68)
 Sand and Dust
 Salt Fog
 Relative Humidity

Standard Designs

(.100" thick panel mount, contact Spectrum Control for mounting recommendations)

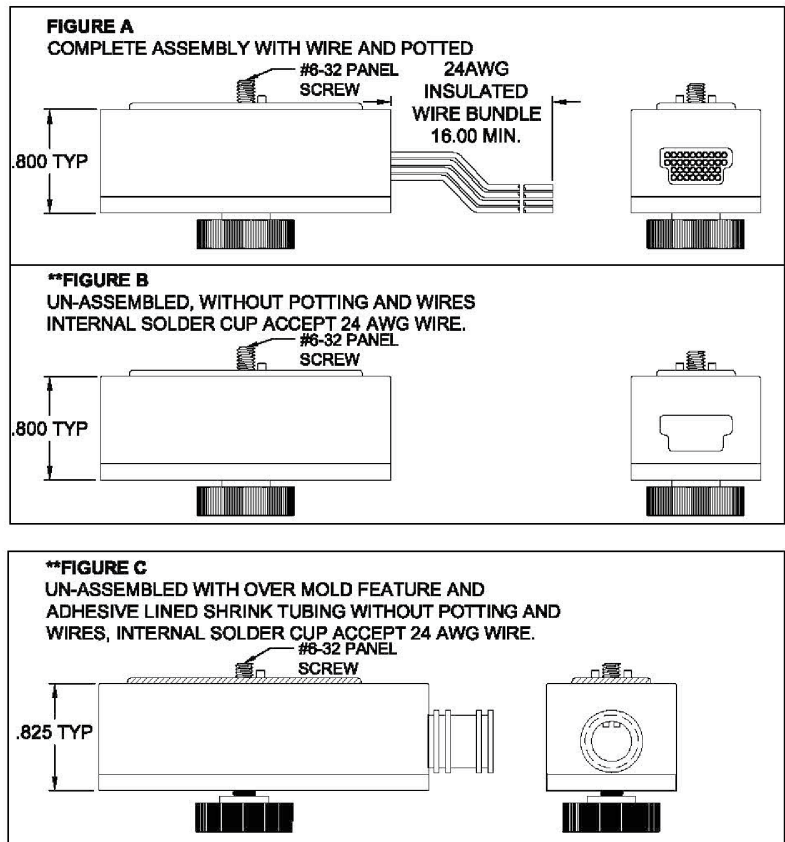
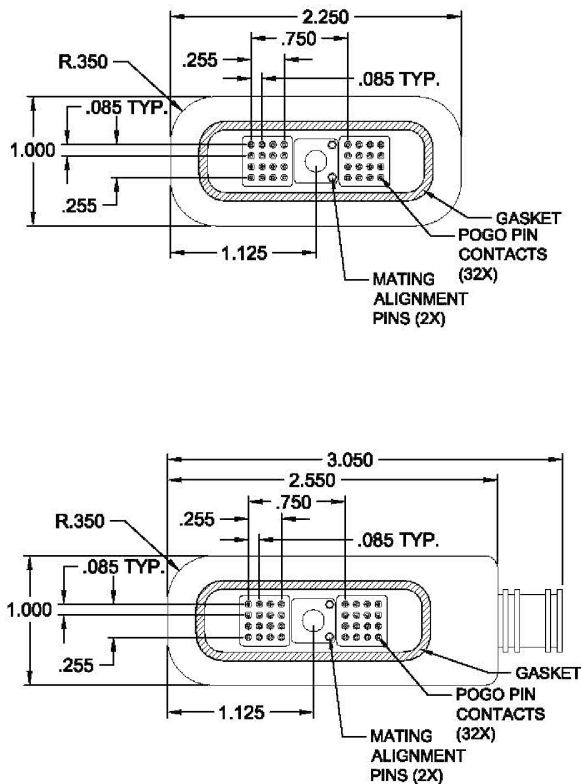
P/N	Capacitance	WVDC	Current Rating	Terminal Type	Description
58-001-011	Unfiltered (10pF Max)	100	5A Max.	PC-Tail	Unfiltered, Pin 8 Grounded to Housing
58-001-015	Unfiltered (10pF Max)	100	5A Max.	PC-Tail	Unfiltered, All Lines Insulated
58-002-001	1750pF +/-20%	50	5A Max.	PC-Tail	All Lines Filtered except Pin 8 Grounded

Rapid Mate Connectors

Rugged, hot shoe style connector ensuring system functionality in EMI-prone applications.

Ruggedized Rapid Mate (Female Type)

Spectrum Control Rapid Mate (Female Type) mates directly with the (Male Type) detailed on Page 1 to provide a complete interconnect solution.



General Specifications

Electrical

Capacitance: Unfiltered
Working Voltage: 100VDC
Max. Current Rating: 5A Max.

Material/Finish

Pogo Pins: Gold Plated/Copper
Alloy Housing/Lid: Nickel Plated/
Aluminum **Gasket:** Silicone
Insulator: High Temperature Plastic
Captive & Lid Screws: Stainless
Steel

Environmental (Per MIL-STD-810)

2 Meter Immersion
Sand and Dust
Salt Fog
Relative Humidity
**** Figures B & C designed to meet the detailed environmental performance as an assembled and potted/over molded unit**

Standard Designs

P/N	Capacitance	WVDC	Current Rating	Figure	Description
58-001-005	Unfiltered (10pF Max)	100	5A Max.	A	Complete assembly w/wires and potting
58-001-012	Unfiltered (10pF Max)	100	5A Max.	B	Unassembled, w/o potting and wires, internal solder cups accept 24AWG wire
58-001-013	Unfiltered (10pF Max)	100	5A Max.	C	Unassembled, w/ overmold feature and adhesive lined shrink tubing, w/o potting and wires, internal solder cups accept 24 AWG wire