

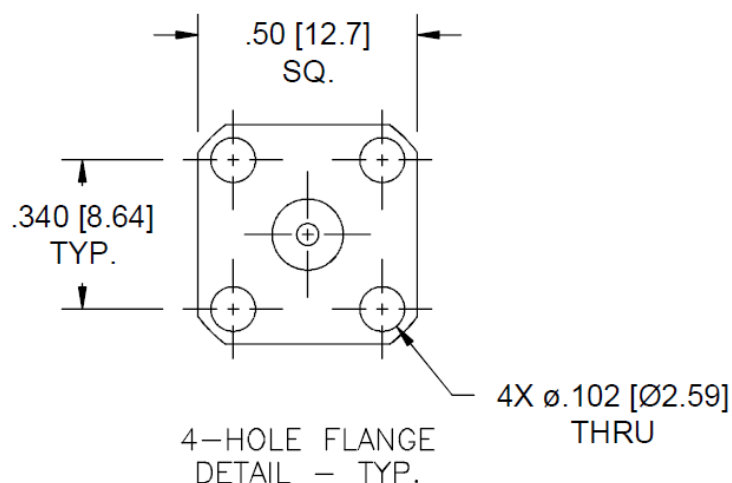
# Adapters, In-Series SMA, Flange Mount

**DC - 18 GHz**

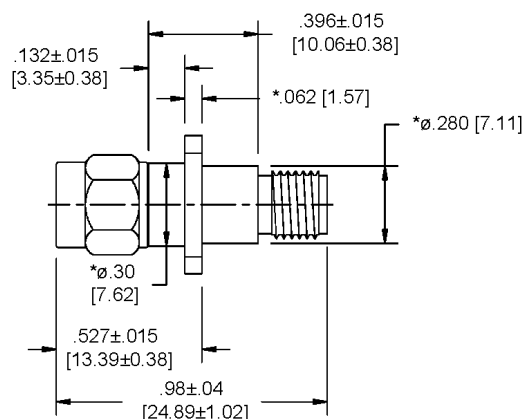
MODELS: 5311A, 5312A, 5313A

## Technical Specifications

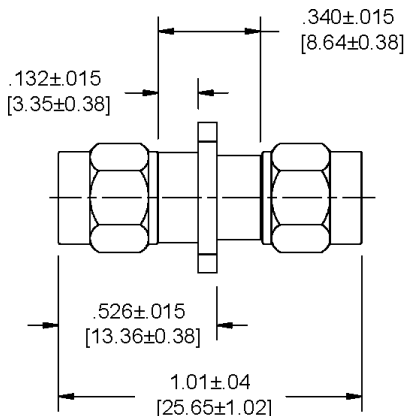
Parameter	Value
<i>Electrical</i>	
Frequency Range	DC – 18 GHz
VSWR	DC – 6 GHz 1.10:1 max. 6 – 12.4 GHz 1.15:1 max. 12.4 – 18 GHz 1.20:1 max.
Impedance	50 Ohms
Operation Temp. Range	-65°C to +125°C
<i>Mechanical</i>	
Connectors Mates with MIL-STD-348	Passivated Stainless Steel
Conductors	Gold Plated Beryllium Copper



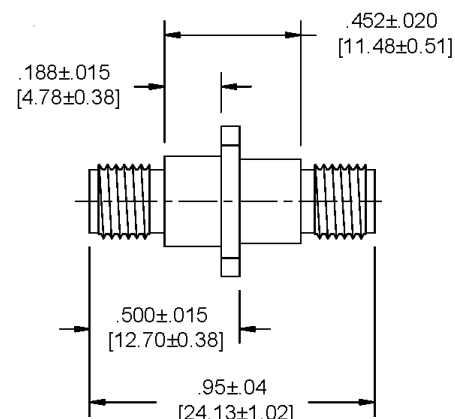
**Model Number 5311A**  
Male/Female Connector



**Model Number 5312A**  
Male/Male Connector



**Model Number 5313A**  
Female/Female Connector



\*Dimensions indicated with an asterisk (\*) are typical for all 3 models shown.

\*\*Dimensions in brackets are expressed in millimeters and are for reference only.

sales@am.spectrumcontrol.com

Approved for Release: November 2024/Brown

Spectrum Control reserves the right to make changes to datasheets at any time without notice.