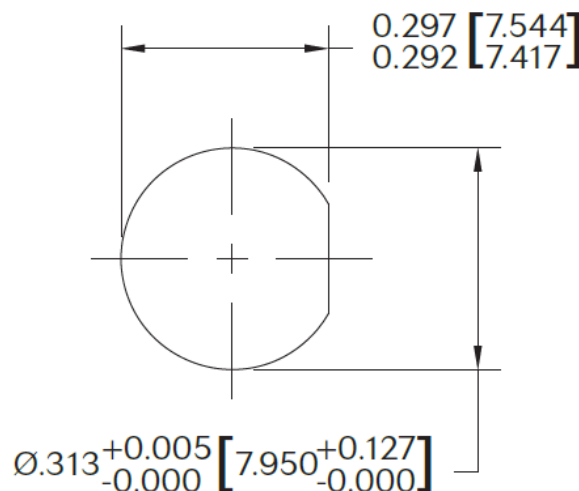


Technical Specifications

RoHS
 Compliant

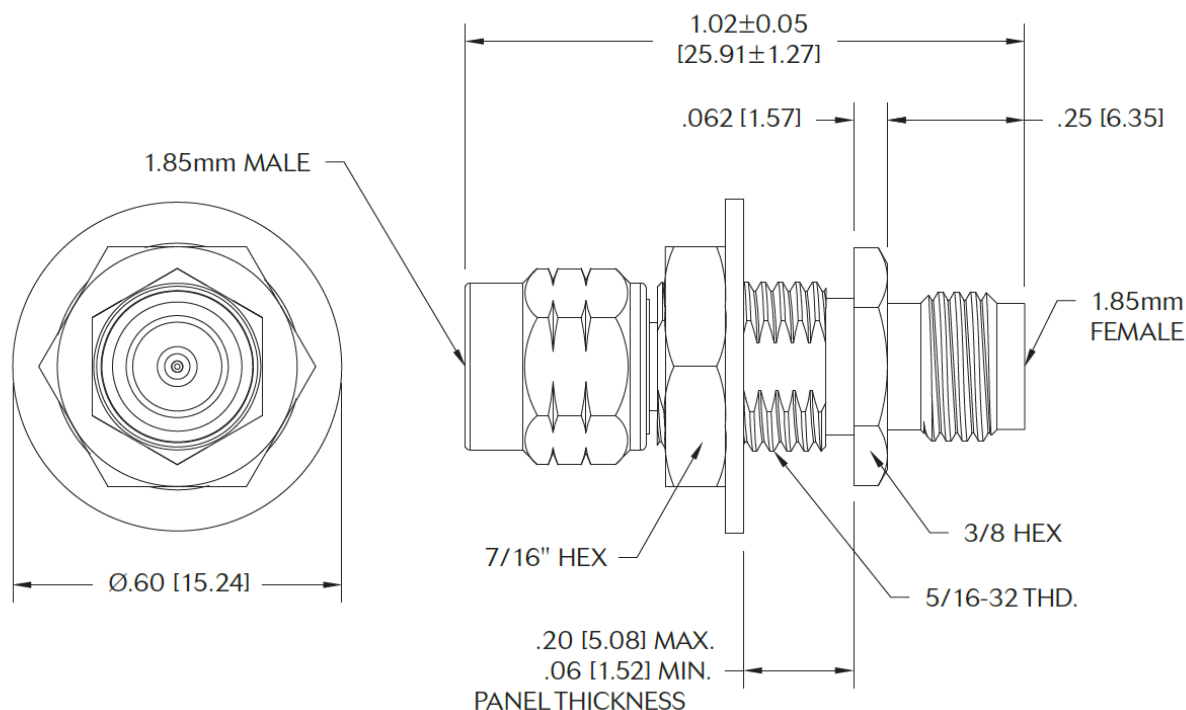
Parameter	Value
<i>Electrical</i>	
Frequency Range	DC – 65 GHz
VSWR	DC – 18 GHz 1.25:1 max. 18 – 40 GHz 1.40:1 max. 40 – 65 GHz 1:50:1 max.
Nominal Impedance	50 Ohms
Operation Temp. Range	-65°C to +85°C
<i>Mechanical</i>	
1.85mm Connectors Mates with 2.4mm and V* connectors	Passivated Stainless Steel
Conductors	Gold Plated Beryllium Copper
Coupling Nut	Passivated Stainless Steel

*V is a trademark of Anritsu Corp.



RECOMMENDED
 MOUNTING HOLE

Model Number 5292



Coupling nut, retaining ring, panel nut and lock washer are shipped unassembled.

**Dimensions in brackets are expressed in millimeters and are for reference only.

sales@am.spectrumcontrol.com

Approved for Release: November 2024/Brown

Spectrum Control reserves the right to make changes to datasheets at any time without notice.