

Technical Specifications

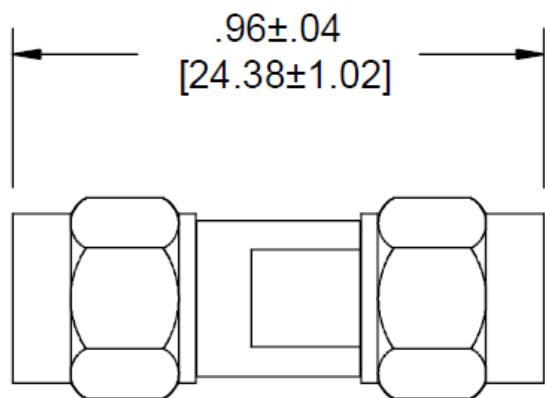
Parameter	Value
<i>Electrical</i>	
Frequency Range	DC – 26.5 GHz
VSWR	1.25:1 max.
Impedance	50 Ohms
Operation Temp. Range	-65°C to +125°C

Parameter	Value
<i>Mechanical</i>	
2.9mm Connectors Mates with SMA, 3.5mm and K* connectors as well as SMK IAW MIL-STD-348.	Passivated Stainless Steel
SMA Connectors Mates with MIL-STD-348.	Passivated Stainless Steel
Conductors	Gold Plated Beryllium Copper

*K is a trademark of Anritsu Corp.

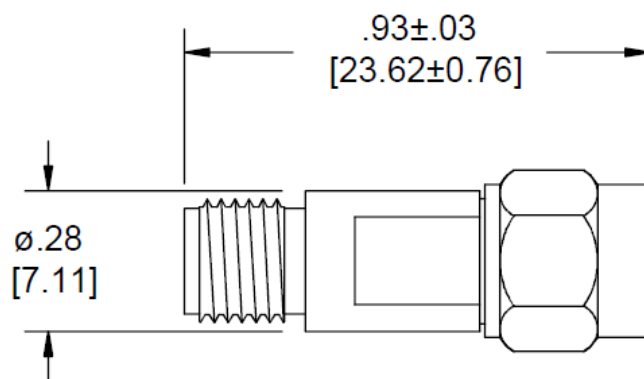
Model Number 5262

SMA Male / 2.9mm Male



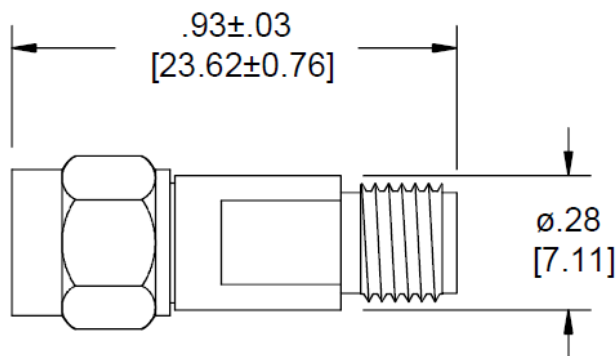
Model Number 5263

SMA Female / 2.9mm Male



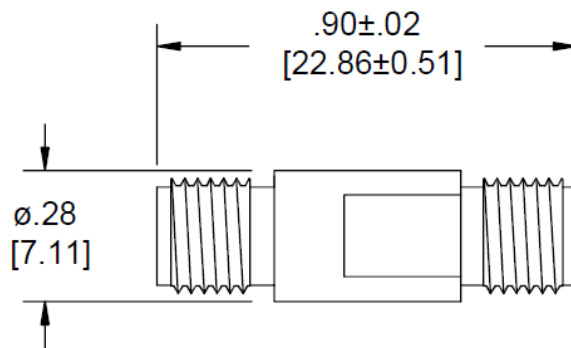
Model Number AA-5264

SMA Male / 2.9mm Female



Model Number 5265

SMA Female / 2.9mm Female



**Dimensions in brackets are expressed in millimeters and are for reference only.

sales@am.spectrumcontrol.com

Approved for Release: November 2024/Brown

Spectrum Control reserves the right to make changes to datasheets at any time without notice.