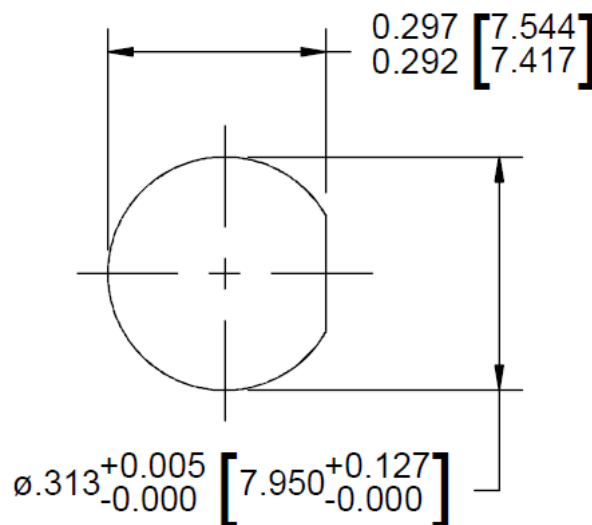


Technical Specifications

Parameter	Value
Electrical	
Frequency Range	DC – 40 GHz
VSWR	DC – 18 GHz 1.15:1 max. 18 – 26.5 GHz 1.25:1 max. 26.5 – 40 GHz 1.35:1 max.
Nominal Impedance	50 Ohms
Operation Temp. Range	-65°C to +125°C
Mechanical	
2.9mm Connectors Mates SMA, 3.5mm and K* connectors, as well as SMK IAW MIL-STD-348	Passivated Stainless Steel
Conductors	Gold Plated Beryllium Copper
Coupling Nut	Passivated Stainless Steel

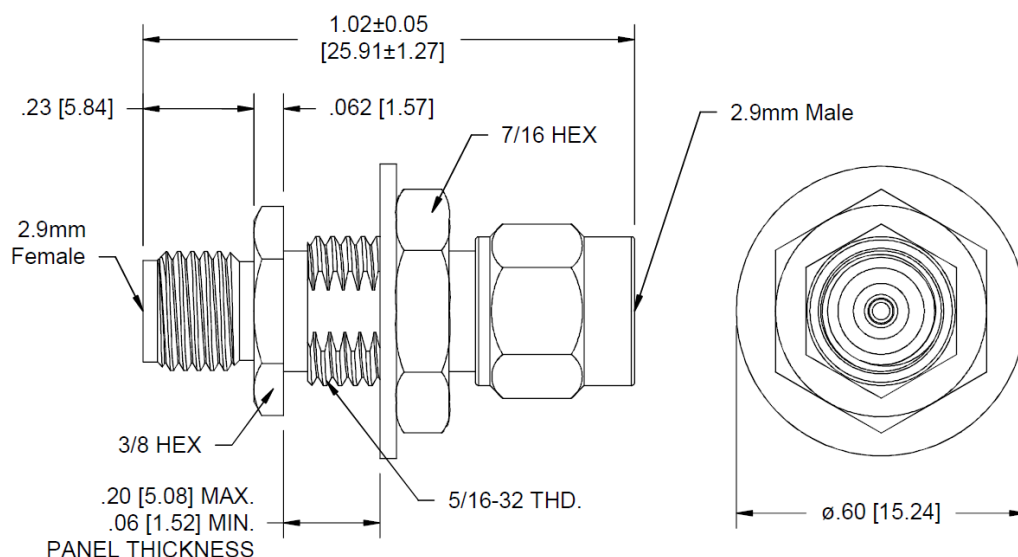
*K is a trademark of Anritsu Corp.



Recommended Mounting Hole

Model Number AA-5223

Includes O-ring as shown



- Overall length is with coupling nut biased fully forward (installed length).
- Coupling nut, retaining ring, panel nut and lock washer are shipped unassembled.