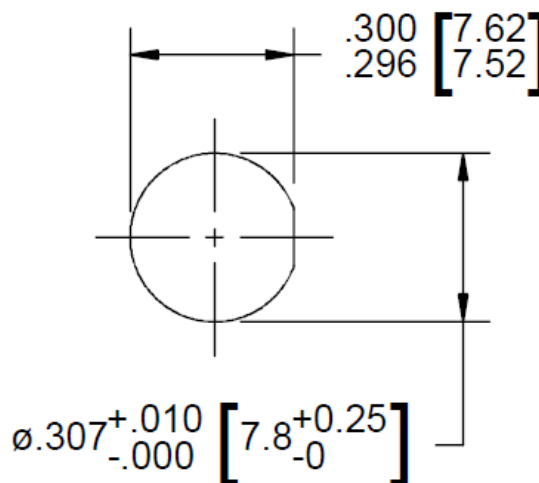


## Technical Specifications

Parameter	Value
<i>Electrical</i>	
Frequency Range	DC – 50 GHz
VSWR	DC – 18 GHz 1.10:1 max. 18 – 26.5 GHz 1.20:1 max. 26.5 – 40 GHz 1.30:1 max. 40 – 50 GHz 1.35:1 max.
Impedance	50 Ohms
Operation Temp. Range	-65°C to +125°C
<i>Mechanical</i>	
2.4mm Connectors	Passivated Stainless Steel
Conductors	Gold Plated Beryllium Copper
Nut & Washer	Passivated Stainless Steel
O-Ring	Silicone Rubber



Recommended Mounting Hole

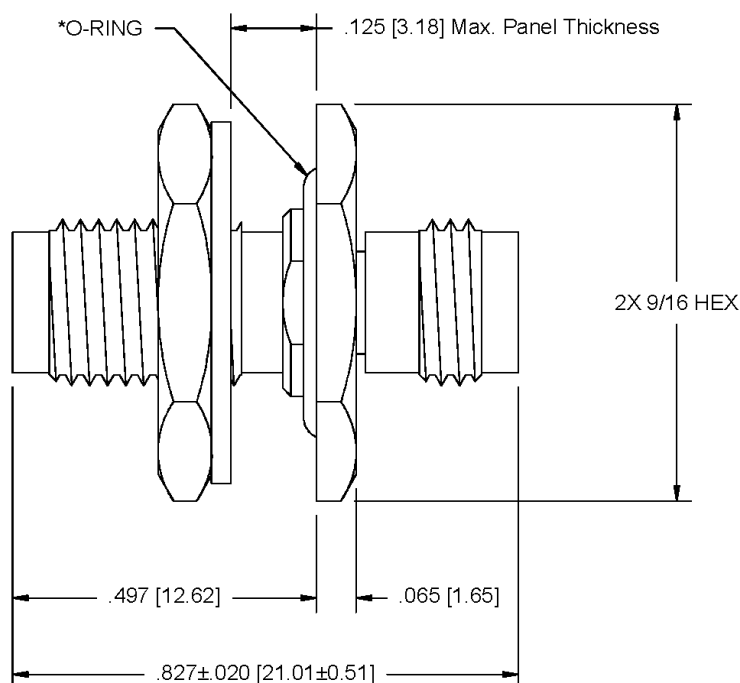
### Model Number AA-5221

Includes O-ring as shown

### Model Number AA-5222

No O-ring included

\*\*Dimensions in brackets are expressed in millimeters and are for reference only.



Panel nut, lock washer and O-ring are shipped unassembled.