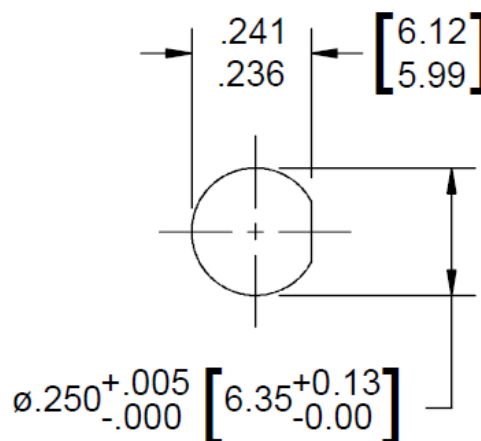


Technical Specifications

Parameter	Value
<i>Electrical</i>	
Frequency Range	DC – 40 GHz
VSWR	DC – 18 GHz 1.10:1 max. 18 – 26.5 GHz 1.20:1 max. 26.5 – 40 GHz 1.30:1 max.
Impedance	50 Ohms
Operation Temp. Range	-65°C to +125°C

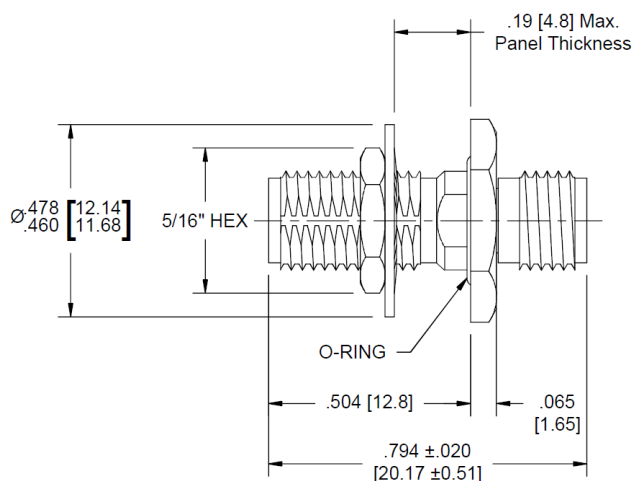
<i>Mechanical</i>	
Connectors Mates both mechanically and electrically with all SMA, K* and 3.5mm series connectors.	Passivated Stainless Steel
Conductors	Gold Plated Beryllium Copper
Nut & Washer	Passivated Stainless Steel
O-Ring	Silicone Rubber

*K is a trademark of Wiltron Corp.

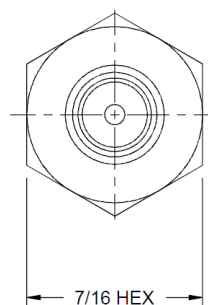


Recommended Mounting Hole

Model Number AA-5214



**Dimensions in brackets are expressed in millimeters and are for reference only.



Panel nut, lock washer and O-ring are shipped unassembled.