

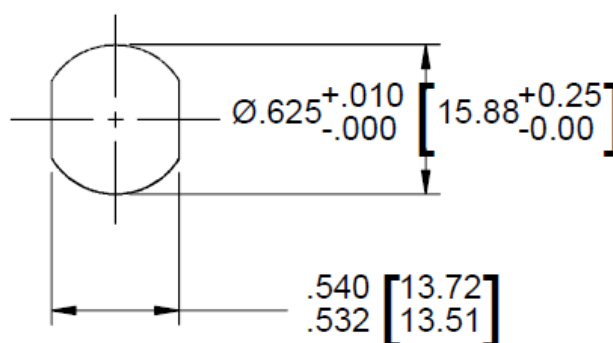
# Adapters, Between Series Type N / SMA, Bulkhead Mount

**DC – 18 GHz**

MODELS: 5209, AA-5210, AA-5212, AA-5213

## Technical Specifications

Parameter	Value
<i>Electrical</i>	
Frequency Range	DC – 18 GHz
VSWR	1.20:1 max.
Impedance	50 Ohms
Operation Temp. Range	-65°C to +125°C
<i>Mechanical</i>	
Connectors Mates with MIL-STD-348	Passivated Stainless Steel
Conductors	Gold Plated Beryllium Copper
Nut & Washer	Passivated Stainless Steel
O-Ring	Silicone Rubber



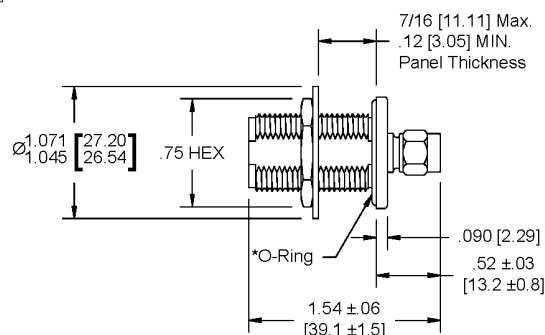
Recommended Panel Configuration

### Model Number AA-5213

Type N Female / SMA Male, O-ring included

### Model Number AA-5210

Type N Female / SMA Male, O-ring not included

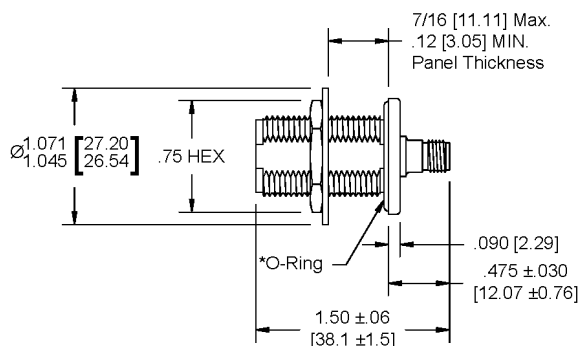


### Model Number AA-5212

Type N Female / SMA Female, O-ring included

### Model Number 5209

Type N Female / SMA Female, O-ring not included



Panel nut, lock washer and O-ring are shipped unassembled.

\*\*Dimensions in brackets are expressed in millimeters and are for reference only.