

Termination, SMA

Model 3175M-CRYO

Frequency Range: DC to 18.0GHz

Power: 2Watts

Features

- Stable Attenuation over temperature
- Low thermal noise characteristics
- Minimal self heating, achieves temperature faster
- Optimized non-magnetic material selection



Technical Specifications

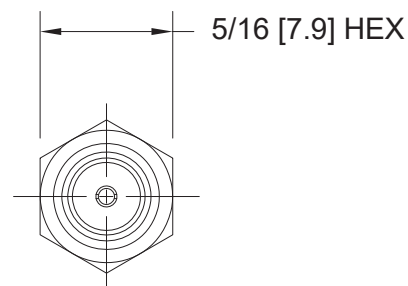
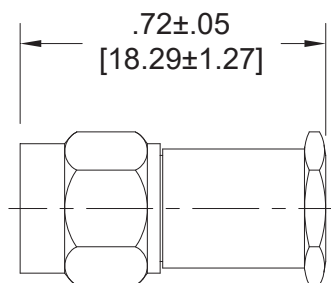
Parameter	Value
Frequency Range	DC to 18 GHz
VSWR	1.25:1 Max.
Input Power	2 Watts Avg. @ 25°C
Impedance	50 Ohms
Operating Temp. Range	-4°mK to +125°C

Mechanical

Feature	Material
SMA Connectors <i>Mates with MIL-STD-348</i>	White Bronze Plated Brass
Conductors	Gold Plated Beryllium Copper
Substrate	Beryllium Oxide

Physical Dimensions

Model Number: 3175M-CRYO shown



Dimensions in brackets [] are expressed in Millimeters and are for reference only

sales@am.spectrumcontrol.com

Approved for Release: April 2025/Brown

Spectrum Control reserves the right to make changes to datasheets at any time without notice.