

Terminations

7/16 DIN

DC – 7.5 GHz
5 Watts

MODELS: 3073DM, 3073DMC

Technical Specifications

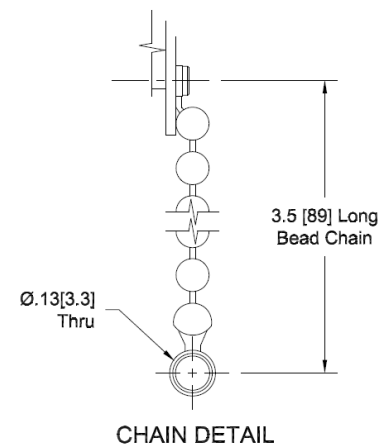
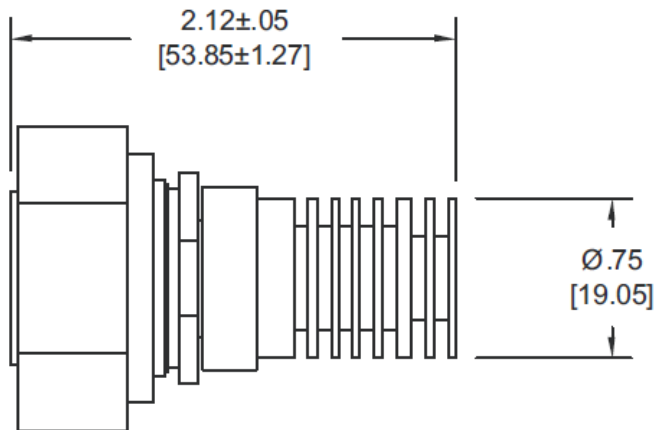
| Parameter | Value |
|-----------------------|---|
| <i>Electrical</i> | |
| Frequency Range | DC – 7.5 GHz |
| VSWR | DC – 4 GHz 1.25:1 max. 4 – 7.5 GHz 1.45:1 max. |
| Input Power | 5 Watts Average @ 25°C <i>Derated linearity to 1 watt @ +125°C</i> |
| Peak Power | 5 kW max. (5µSec pulse, 0.05% duty cycle) |
| Impedance | 50 Ohms |
| Operation Temp. Range | -65°C to +125°C |

| Parameter | Value |
|--|---|
| <i>Mechanical</i> | |
| 7/16 DIN Connectors <i>Mates with MIL-STD-348</i> | Silver Plated Brass |
| Conductors | Silver Plated Beryllium Copper or Brass |
| Housing | Anodized Aluminum |
| *Bead Chain | Passivated Stainless Steel |

*To include chain, order part # 3073DMC

Model Number 3073DM

7/16 DIN Male Connector



**Dimensions in brackets are expressed in millimeters and are for reference only.

sales@am.spectrumcontrol.com

Approved for Release: April 2025/Brown

Spectrum Control reserves the right to make changes to datasheets at any time without notice.