

RF AMPLIFIER

MODEL BXMP1037

Available as: BXMP1037, SMA Connectorized Housing
 WNMP1037, 10 Pin 0.625" Sq Surface Mount (SG4)
 ** Special Pinout for the WNMP1037 package **

Features

- High Third Intercept: +40 dBm Typical
- High Output Power: +31 dBm Typical
- Operating Temp. -20 °C to +70 °C
- Environmental Screening Available

Specifications

CHARACTERISTIC	TYPICAL Ta = 25 °C	MIN/MAX Ta = -20 °C to +70 °C
Frequency	1000 - 2000 MHz	1000 - 2000 MHz
Gain (dB)	19.0	17.0
Power @ 1 dB Comp. (dBm)	+31	+30 Min.
Reverse Isolation (dB)	-24	-23 Max.
VSWR In	1.5:1	2.0:1 Max.
VSWR Out	1.5:1	2.0:1 Max.
Noise Figure (dB)	6.0	7.0 Max.
Power Vdc	+15	+15
Power mA	450	500 Max.

Note: Care should always be taken to effectively ground the case of each unit.

Revision 5/6/2024

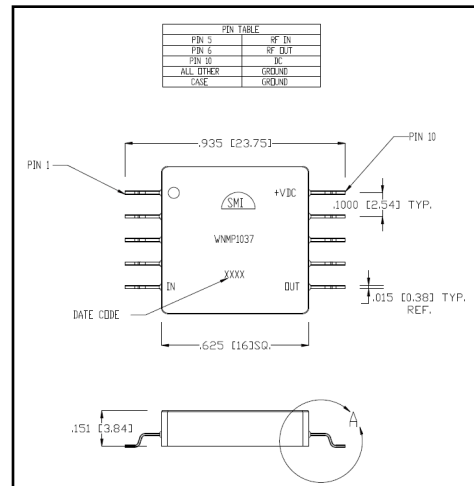
- ECN: IP3 and IP2 values updated.
- Input CW RF Power updated
- Noise Figure updated to 7 dB Max.

Typical Intermodulation Performance at 25 °C

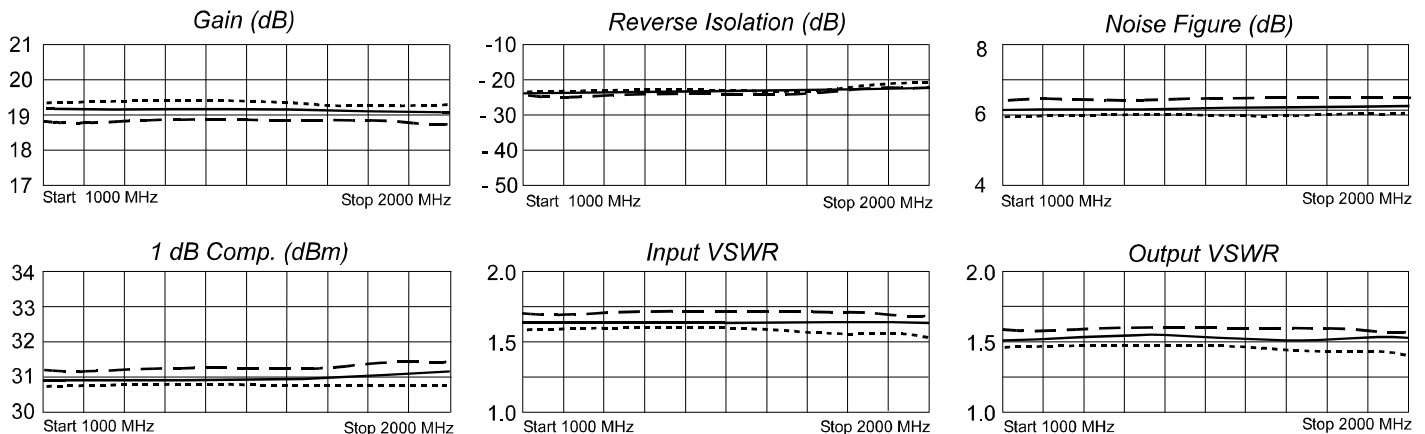
Second Order Harmonic Intercept Point+70 dBm (Typ.)
 Second Order Two Tone Intercept Point+65 dBm (Typ.)
 Third Order Two Tone Intercept Point+40 dBm (Typ.)

Maximum (NO DAMAGE) Ratings

Ambient Operating Temperature -55°C to +100 °C
 Storage Temperature -62°C to +125 °C
 Case Temperature +125 °C
 DC Voltage +18 Volts
 Continuous RF Input Power +13 dBm
 Short Term RF Input Power 50 Milliwatts (1 Minute Max.)
 Maximum Peak Power 0.5 Watt (3 µsec Max.)



Typical Performance Data



Legend ——— +25 °C - - - +70 °C ····· -20 °C

