



SUCCESS STORY

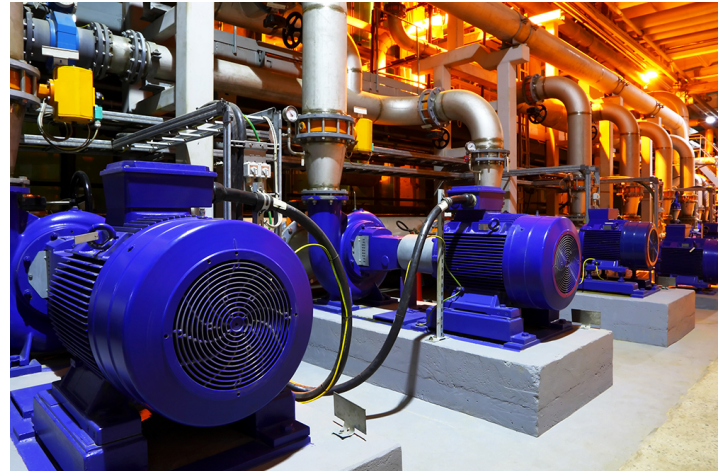
Filtered Connectors for Industrial Motors

Filtered circular connectors are incorporated into industrial motors, ensuring proper functionality.

Electric motors play a key role in industrial processes. By safely transforming electrical energy into mechanical energy, systems function as expected, and production keeps on schedule. Spectrum Control's filtered circular connectors protect industrial motors from the electromagnetic interference (EMI) commonly found in these operations.

Why Spectrum Control's Connectors are Selected

Spectrum Control has a long history of supplying reliable and effective connectors for the rugged conditions found in manufacturing plants, power generation facilities, and military applications. Plus, our filtered compact shell connectors provide an effective filtering device that reduces the real estate required within a product enclosure. Using our EMI filtering design and manufacturing expertise, we offer planar-style filtered arrays, available in C and Pi circuits up to 200nF in most configurations.



Filtered connectors protect industrial motors from EMI, including in harsh, high vibration environments.

Clear Competitive Differentiators

Spectrum Control supplied black nickel-zinc plated connectors for the industrial motors pictured above. This RoHS compliant version is resistant to corrosion and maintains electrical conductivity while reducing reflectivity on the surface. The aluminum alloy shell is manufactured with high-grade aluminum which makes the connector more durable but also lightweight for high performance.

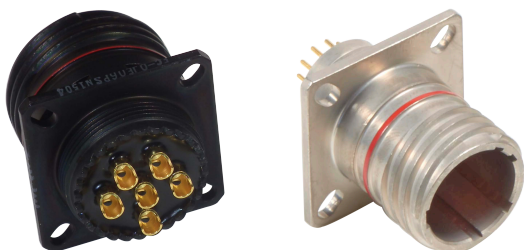
Plus, these connectors are environmentally sealed for harsh environmental applications, making them ideal for industrial environments.

Features highlights

- Available in MIL-DTL-38999 and other standard MIL configurations
- Operating temperature: -55°C - 125°C
- Voltage rating: 200VDC
- Custom designs available

Filtered connectors protect industrial motors from EMI in harsh, high vibration environments.

Spectrum Control designs and manufactures its line of circular connectors, including the ceramic capacitors used as the filtering element, in the USA at our State College, PA facility. This provides our customers with high-quality parts, and delivers the industry's shortest lead times of 16 to 18 weeks.



Spectrum Control's standard connector offerings are available in black nickel zinc and nickel plating.