

Blind-Mate Connectors...DC-40.0 GHz

Model Number	Connector Type	Frequency Range (GHz)	SWR (Maximum)	Loss (Maximum dB)	Page No.
)7008	Pressurized SMA Female	DC - 40.0	1.30-1.65*	0.3-1.5*	188
)7034	2.92mm Female, Rear Lock, Floating	DC - 40.0	1.35-1.55*	0.50	189
7034-1	2.92mm Female, Rear Lock, Fixed	DC - 40.0	1.35-1.55*	0.85	
7035	2.92mm Female, Front Locking Hex Nut, Floating	DC - 40.0	1.35-1.55*	0.50	190
7035-1	2.92mm Female, Front Locking Hex Nut, Fixed	DC - 40.0	1.35-1.55*	0.85	
7035R	2.92mm Female, Front Locking, Floating, Round Nut	DC - 40.0	1.35-1.55*	0.85	
7035R-1	2.92mm Female, Front Locking, Fixed, Round Nut	DC - 40.0	1.35-1.55*	0.85	

* *Varies with frequency.*

Applications

Ideal applications for these high quality/high frequency connectors range from mass-mount and receiver interface subsystems that house hundreds of high frequency connectors to single connector configurations. In either case these connectors allow threadless connector mating which is very useful when mating an array of connectors on one RF module to another array or connector within seconds.

Figure 2 shows a typical application where each connector half contains 7035R series connectors. These connectors contain spring loaded inner/outer contacts which allows for extremely long contact life as well as 0.02 per pair maximum radial and axial offset misalignment while still meeting all the specified electrical specifications.

Spectrum Control / Weinschel offers a variety of standard models which are designed to fit or be configured into a wide range of applications:

- /// **Pressurized Designs** - Model FD7008 is equipped with a flange arrangement designed to withstand 1000 PSI of hydrostatic pressure. This model can be mated with another FD7008 or any FD7034 or 7035 series Planar Blind-mate.
- /// **Rear Locking** - Models FD7034 & 7034-1 are beneficial in applications where there is easy access to the front of the connector for holding while the cable and connector is added or removed. Rotation is also prevented if the connector front is inserted in a slot which could allow for easier cable and connector assembly installation.
- /// **Front Locking** - Models 7035, 7035-1, 7035R & 7035R-1 are beneficial in applications where the cable and connector will be inserted as an assembly into a panel or connector module from the rear.
- /// **Custom Configurations** - Other types of Planar Blind-mate connectors such as SMA, SMB, 3.5mm, flange, microstrip/pc board mount launch, test probes, frequency specific, arrays or interface subsystems can be designed for your particular application.

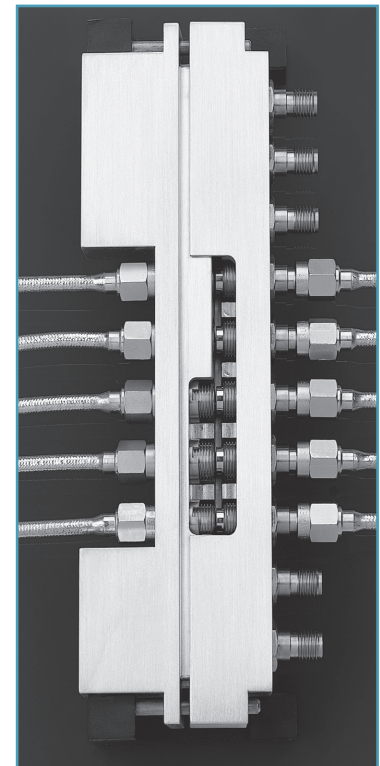
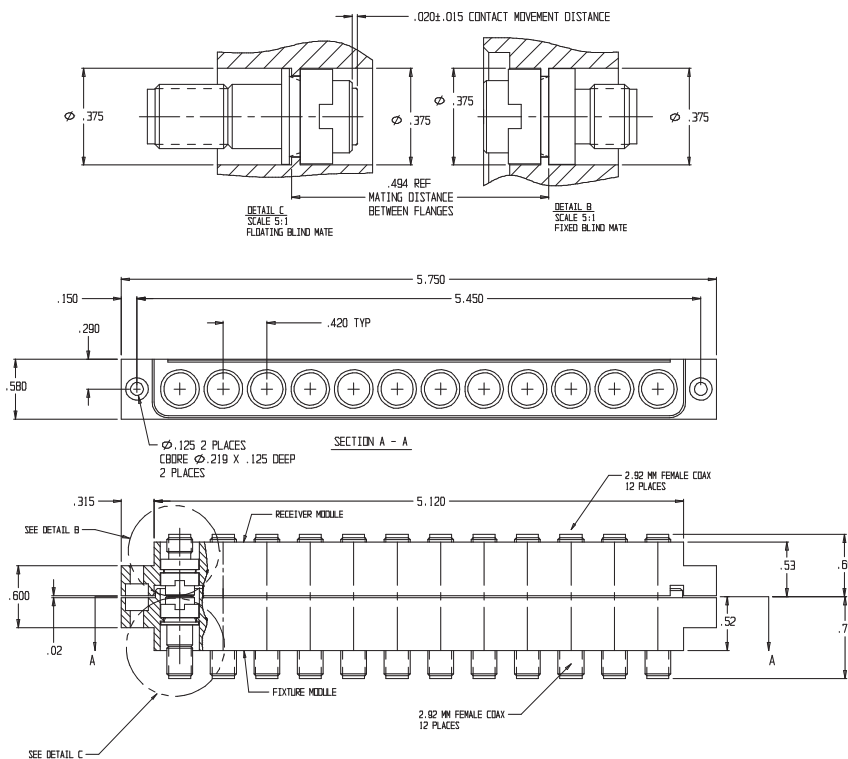


Figure 2. Typical Application

Model FD7008

DC to 40.0 GHz



Specifications

NOMINAL IMPEDANCE: 50 Ω

FREQUENCY RANGE: DC to 40.0 GHz

POWER RATING: 50 Watts CW, 500 Watts peak

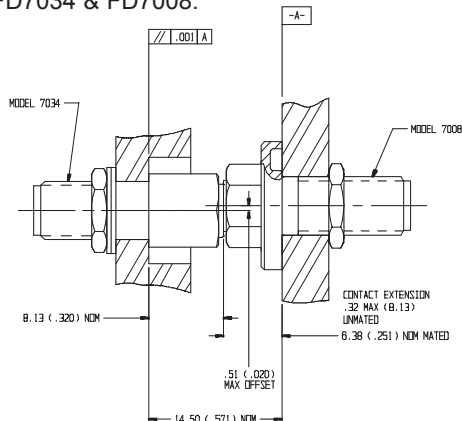
INSERTION LOSS (dB) & SWR*:

Frequency (GHz)	SWR		Loss	
	typical	maximum	typical	maximum
DC - 18	1.20	1.30	0.3	0.5
18 - 26.5	1.30	1.40	0.6	0.8
26.5 - 40	1.45	1.65	1.0	1.5

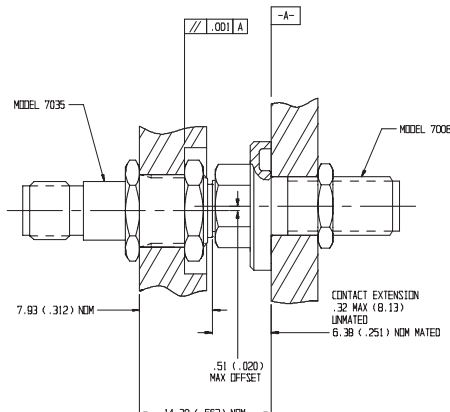
*Specifications are for mated pair (Mated pair can be any combination of Model FD7008 and 7035).

Applications

Model FD7034 & FD7008:



Model 7035 & FD7008:



HYDROSTATIC PRESSURE: 1000 PSI

STATIC PRESSURE: 50 PSI

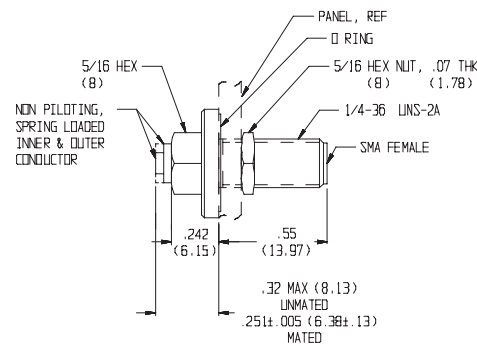
TEMPERATURE RANGE: -50°C to +125°C

RADIAL OFFSET ALLOWED: 0.02 per pair

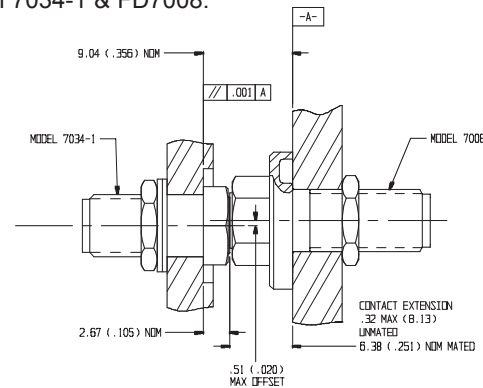
CONNECTORS: Stainless Steel SMA connectors per MIL-STD-348 interface dimensions - mate nondestructively with MIL-C-39012 connectors.

WEIGHT: 2 oz (56.7 g) maximum

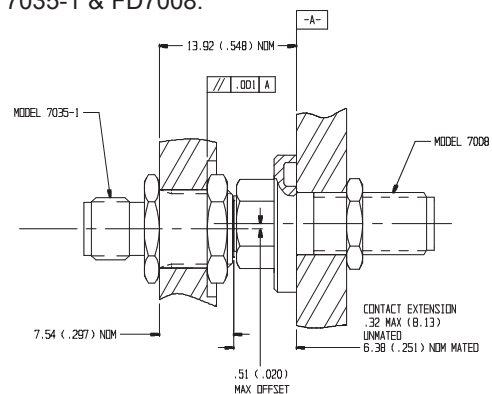
PHYSICAL DIMENSIONS:



Model 7034-1 & FD7008:



Model 7035-1 & FD7008:

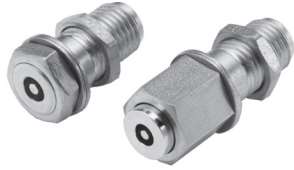


NOTE:

1. All dimensions are given in mm (inches) and are maximum, unless otherwise specified.
2. Unit available with RoHS compliant materials, specify when ordering.

Models FD7034 & 7034-1

DC to 40.0 GHz

 **RoHS**

Specifications
NOMINAL IMPEDANCE: 50 Ω

FREQUENCY RANGE: DC to 40.0 GHz

INSERTION LOSS REPEATABILITY: ±0.1 dB typical

MECHANICAL LIFE: 25,000 matings minimum

INSERTION LOSS (dB) & SWR:

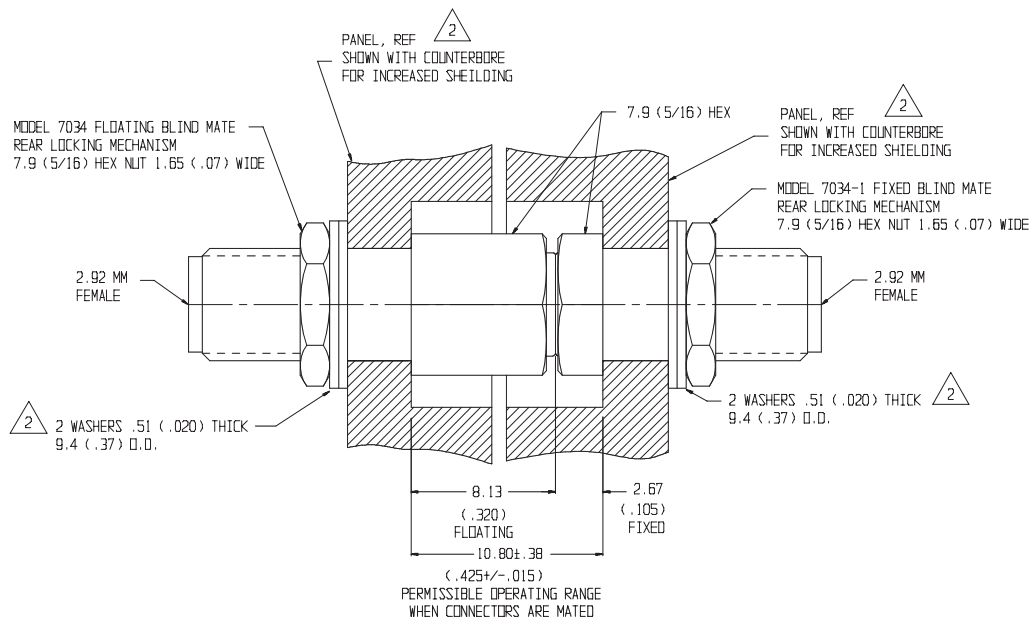
Frequency (GHz)	Loss (maximum)	SWR (maximum)
DC - 18	0.50	1.35
18 - 40	0.85	1.55

RADIAL OFFSET ALLOWED: ±0.02 inches per pair

TEMPERATURE RANGE: -50°C to +100°C

CONNECTORS: Stainless Steel 2.92mm connector with gold plated contacts - mate nondestructively with SMA connectors per MIL-C-39012, 3.5mm, SMK, and other 2.92mm connectors.

WEIGHT: 2 oz, (56.7 g) maximum

PHYSICAL DIMENSIONS:


- NOTES:
- All dimensions are given in mm (inches) and are nominal, unless otherwise specified.
 - Maximum panel thickness for Model FD7034 is 4.9 (0.195). For panels less than 4.2 (0.165) installation requires appropriate washer.
 - Unit available with RoHS compliant materials, specify when ordering.

Models 7035, 7035-1, 7035R & 7035R-1

DC to 40.0 GHz



INSERTION LOSS (dB) & SWR:

Frequency (GHz)	Loss (maximum)	SWR (maximum)
DC - 18	0.50	1.35
18 - 40	0.85	1.55

Specifications

NOMINAL IMPEDANCE: 50 Ω

FREQUENCY RANGE: DC to 40.0 GHz

INSERTION LOSS REPEATABILITY: ±0.1 dB typical

MECHANICAL LIFE: 25,000 matings minimum

PHYSICAL DIMENSIONS:

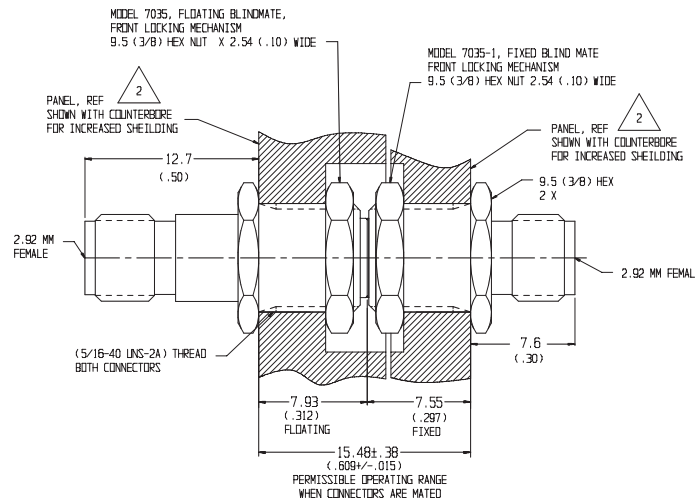
Models 7035 & 7035-1:

RADIAL OFFSET ALLOWED: ±0.02 inches per pair

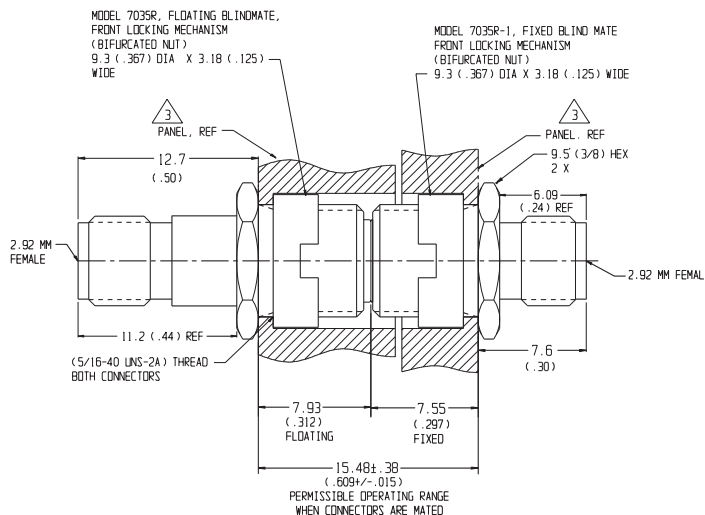
TEMPERATURE RANGE: -50°C to +100°C

CONNECTORS: Stainless Steel 2.92mm connector with gold plated contacts - mate nondestructively with SMA connectors per MIL-C-39012, 3.5mm, SMK, and other 2.92mm connectors.

WEIGHT: 2 oz (56.7 g) maximum



Models 7035R & 7035R-1:



- NOTES:
1. All dimensions are given in mm (inches) and are nominal, unless otherwise specified.
 2. Maximum panel thickness for Model 7035 is 4.9 (0.195).
 3. Panel flange thickness of 1.0 (0.03) shown for 7035R. Connector Mating shown with counterbore for increased shielding effectiveness.
 4. Unit available with RoHS compliant materials, specify when ordering